



www.skyjacker.com

Jeep Gladiator JT 3.5" Suspension Lift Installation Instructions

Required Tools List:

- **SAE Hex Key & SAE Sockets \ Wrenches**
(5/32" & 7/32" Hex Key Sockets,
7/16", 1/2", 9/16" & 1-1/8")
- **Metric Hex Key & Metric Sockets \ Wrenches**
(6mm Hex Key Socket, 10mm, 13mm, 15mm,
18mm, 19mm, 21mm, 22mm & 24mm)
- **Jack Stands** • **Floor Jack**
- **Measuring Tape** • **Paint Marker**
- **Pliers** • **Safety Glasses**
- **Torque Wrench**



Before beginning installation, read these instructions & enclosed driver's WARNING NOTICE thoroughly & completely. Also affix WARNING decal in passenger compartment in clear view of all occupants. Please refer to Parts List to insure that all parts & hardware are received prior to disassembly of vehicle. If any parts are found to be missing, contact SKYJACKER® Customer Service at 318-388-0816 to obtain needed items. If you have any questions or reservations about installing this product, contact SKYJACKER® Technical Assistance at 318-388-0816.

Make sure you park vehicle on a level concrete or asphalt surface. Many times a vehicle is not level (side-to-side) from factory, but is usually not noticed until a lift kit has been installed which makes difference more visible. Using a measuring tape, measure front & rear (both sides) from ground up to center of fender opening above axle. Record this information below for future reference.

Driver Side Front: _____ / _____ BEFORE / AFTER	Passenger Side Front: _____ / _____ BEFORE / AFTER
Driver Side Rear: _____ / _____ BEFORE / AFTER	Passenger Side Rear: _____ / _____ BEFORE / AFTER

Important Notes:

- The Drag Link Must Be Adjusted to Center the Steering Wheel Before the Vehicle Is Driven. Failure to Do So Will Cause Computer Errors, Odd Handling Characteristics, & Poor Performance.
- If Larger Tires (10% More Than the OEM Diameter) Are Installed, Speedometer Recalibration Will Be Necessary. Contact Your Local JEEP Dealer or an Authorized Skyjacker® Dealer for Details.
- After Installation, a Qualified Alignment Facility Is Required to Align the Vehicle to the OEM Specifications.

Component Box Breakdown:**Part # G350LT**

Item #	Description	Qty
G24FS-DR	DUAL RATE COIL, FRONT	2
JTG20RMS-S	COIL SPRING SPACER, REAR	2
JL24LLFD-L	LOWER LINK FRONT, DR	1
JL24LLFP-L	LOWER LINK FRONT, PA	1
JLFTBA18-B	TRACK BAR, FRONT	1
34RFTJN	3/4 RIGHT HAND JAM NUT	1
HD34X34DTB	HD 3/4 ROD END / TRACK BAR	1
H-BOX G351	HWDR BOX: G350 / 351 KITS	1

Part # G350LTD

Item #	Description	Qty
G24HDFS-DR	HD DUAL RATE COIL, FRONT	2
JTG20RMS-S	COIL SPRING SPACER, REAR	2
JL24LLFD-L	LOWER LINK FRONT, DR	1
JL24LLFP-L	LOWER LINK FRONT, PA	1
JLFTBA18-B	TRACK BAR, FRONT	1
34RFTJN	3/4 RIGHT HAND JAM NUT	1
HD34X34DTB	HD 3/4 ROD END / TRACK BAR	1
H-BOX G351	HWDR BOX: G350 / 351 KITS	1

Part # G350RLT

Item #	Description	Qty
G23HDFS-DR	HD DUAL RATE COIL, FRONT	2
JTG20RMS-S	COIL SPRING SPACER, REAR	2
JL24LLFD-L	LOWER LINK FRONT, DR	1
JL24LLFP-L	LOWER LINK FRONT, PA	1
JLFTBA18-B	TRACK BAR, FRONT	1
34RFTJN	3/4 RIGHT HAND JAM NUT	1
HD34X34DTB	HD 3/4 ROD END / TRACK BAR	1
H-BOX G351	HWDR BOX: G350 / 351 KITS	1

Part # G350RLTD

Item #	Description	Qty
G34HDFS-DR	HD DUAL RATE COIL, FRONT	2
JTG20RMS-S	COIL SPRING SPACER, REAR	2
JL24LLFD-L	LOWER LINK FRONT, DR	1
JL24LLFP-L	LOWER LINK FRONT, PA	1
JLFTBA18-B	TRACK BAR, FRONT	1
34RFTJN	3/4 RIGHT HAND JAM NUT	1
HD34X34DTB	HD 3/4 ROD END / TRACK BAR	1
H-BOX G351	HWDR BOX: G350 / 351 KITS	1

Part # G35B

Item #	Description	Qty
B8387 (FRONT)	BLACK MAX SHOCK W/BLK BOOT	2
B8396 (REAR)	BLACK MAX SHOCK W/BLK BOOT	2

Part # G35M

Item #	Description	Qty
M9387 (FRONT)	M95 MONOTUBE SHOCK	2
M9396 (REAR)	M95 MONOTUBE SHOCK	2

Component Box Breakdown:**Part # G351LT**

Item #	Description	Qty
G24FS-DR	DUAL RATE COIL, FRONT	2
G210RS-DR	DUAL RATE COIL, REAR 21.0	1
G215RS-DR	DUAL RATE COIL, REAR 21.5	1
JL24LLFD-L	LOWER LINK FRONT, DR	1
JL24LLFP-L	LOWER LINK FRONT, PA	1
JLFTBA18-B	TRACK BAR, FRONT	1
34RFTJN	3/4 RIGHT HAND JAM NUT	1
HD34X34DTB	HD 3/4 ROD END / TRACK BAR	1
H-BOX G351	HWDR BOX: G350 / 351 KITS	1

Part # G351LTD

Item #	Description	Qty
G24HDFS-DR	HD DUAL RATE COIL, FRONT	2
G210RS-DR	DUAL RATE COIL, REAR 21.0	1
G215RS-DR	DUAL RATE COIL, REAR 21.5	1
JL24LLFD-L	LOWER LINK FRONT, DR	1
JL24LLFP-L	LOWER LINK FRONT, PA	1
JLFTBA18-B	TRACK BAR, FRONT	1
34RFTJN	3/4 RIGHT HAND JAM NUT	1
HD34X34DTB	HD 3/4 ROD END / TRACK BAR	1
H-BOX G351	HWDR BOX: G350 / 351 KITS	1

Part # G351RLT

Item #	Description	Qty
JL23HDFS-DR	HD DUAL RATE COIL, FRONT	2
G215RS-DR	DUAL RATE COIL, REAR 21.5	1
G220RS-DR	DUAL RATE COIL, REAR 22.0	1
JL24LLFD-L	LOWER LINK FRONT, DR	1
JL24LLFP-L	LOWER LINK FRONT, PA	1
JLFTBA18-B	TRACK BAR, FRONT	1
34RFTJN	3/4 RIGHT HAND JAM NUT	1
HD34X34DTB	HD 3/4 ROD END / TRACK BAR	1
H-BOX G351	HWDR BOX: G350 / 351 KITS	1

Part # G351RLTD

Item #	Description	Qty
JL34HDFS-DR	HD DUAL RATE COIL, FRONT	2
G215RS-DR	DUAL RATE COIL, REAR 21.5	1
G220RS-DR	DUAL RATE COIL, REAR 22.0	1
JL24LLFD-L	LOWER LINK FRONT, DR	1
JL24LLFP-L	LOWER LINK FRONT, PA	1
JLFTBA18-B	TRACK BAR, FRONT	1
34RFTJN	3/4 RIGHT HAND JAM NUT	1
HD34X34DTB	HD 3/4 ROD END / TRACK BAR	1
H-BOX G351	HWDR BOX: G350 / 351 KITS	1

Part # G35X

Item #	Description	Qty
A2387 (FRONT)	ADX 2.0 REMOTE RESERVOIR	2
A2396 (REAR)	ADX 2.0 REMOTE RESERVOIR	2

Component Box Breakdown:**Part # G350PBLT**

Item #	Description	Qty
G24FS-DR	DUAL RATE COIL, FRONT	2
JTG20RMS-S	COIL SPRING SPACER, REAR	2
JL24LLFD-L	LOWER LINK FRONT, DR	1
JL24LLFP-L	LOWER LINK FRONT, PA	1
JLFTBA18-B	TRACK BAR, FRONT	1
34RFTJN	3/4 RIGHT HAND JAM NUT	1
HD34X34DTB	HD 3/4 ROD END / TRACK BAR	1
H-BOX G351	HWDR BOX: G350 / 351 KITS	1
B8387 (FRONT)	BLACK MAX SHOCK W/BLK BOOT	2
B8396 (REAR)	BLACK MAX SHOCK W/BLK BOOT	2

Part # G350PBLTD

Item #	Description	Qty
G24HDFS-DR	HD DUAL RATE COIL, FRONT	2
JTG20RMS-S	COIL SPRING SPACER, REAR	2
JL24LLFD-L	LOWER LINK FRONT, DR	1
JL24LLFP-L	LOWER LINK FRONT, PA	1
JLFTBA18-B	TRACK BAR, FRONT	1
34RFTJN	3/4 RIGHT HAND JAM NUT	1
HD34X34DTB	HD 3/4 ROD END / TRACK BAR	1
H-BOX G351	HWDR BOX: G350 / 351 KITS	1
B8387 (FRONT)	BLACK MAX SHOCK W/BLK BOOT	2
B8396 (REAR)	BLACK MAX SHOCK W/BLK BOOT	2

Part # G350RPBLT

Item #	Description	Qty
JL23HDFS-DR	HD DUAL RATE COIL, FRONT	2
JTG20RMS-S	COIL SPRING SPACER, REAR	2
JL24LLFD-L	LOWER LINK FRONT, DR	1
JL24LLFP-L	LOWER LINK FRONT, PA	1
JLFTBA18-B	TRACK BAR, FRONT	1
34RFTJN	3/4 RIGHT HAND JAM NUT	1
HD34X34DTB	HD 3/4 ROD END / TRACK BAR	1
H-BOX G351	HWDR BOX: G350 / 351 KITS	1
B8387 (FRONT)	BLACK MAX SHOCK W/BLK BOOT	2
B8396 (REAR)	BLACK MAX SHOCK W/BLK BOOT	2

Part # G350RPBLTD

Item #	Description	Qty
JL34HDFS-DR	HD DUAL RATE COIL, FRONT	2
JTG20RMS-S	COIL SPRING SPACER, REAR	2
JL24LLFD-L	LOWER LINK FRONT, DR	1
JL24LLFP-L	LOWER LINK FRONT, PA	1
JLFTBA18-B	TRACK BAR, FRONT	1
34RFTJN	3/4 RIGHT HAND JAM NUT	1
HD34X34DTB	HD 3/4 ROD END / TRACK BAR	1
H-BOX G351	HWDR BOX: G350 / 351 KITS	1
B8387 (FRONT)	BLACK MAX SHOCK W/BLK BOOT	2
B8396 (REAR)	BLACK MAX SHOCK W/BLK BOOT	2

Component Box Breakdown:**Part # G350PMLT**

Item #	Description	Qty
G24FS-DR	DUAL RATE COIL, FRONT	2
JTG20RMS-S	COIL SPRING SPACER, REAR	2
JL24LLFD-L	LOWER LINK FRONT, DR	1
JL24LLFP-L	LOWER LINK FRONT, PA	1
JLFTBA18-B	TRACK BAR, FRONT	1
34RFTJN	3/4 RIGHT HAND JAM NUT	1
HD34X34DTB	HD 3/4 ROD END / TRACK BAR	1
H-BOX G351	HWDR BOX: G350 / 351 KITS	1
M9387 (FRONT)	M95 MONOTUBE SHOCK	2
M9396 (REAR)	M95 MONOTUBE SHOCK	2

Part # G350PMLTD

Item #	Description	Qty
G24HDFS-DR	HD DUAL RATE COIL, FRONT	2
JTG20RMS-S	COIL SPRING SPACER, REAR	2
JL24LLFD-L	LOWER LINK FRONT, DR	1
JL24LLFP-L	LOWER LINK FRONT, PA	1
JLFTBA18-B	TRACK BAR, FRONT	1
34RFTJN	3/4 RIGHT HAND JAM NUT	1
HD34X34DTB	HD 3/4 ROD END / TRACK BAR	1
H-BOX G351	HWDR BOX: G350 / 351 KITS	1
M9387 (FRONT)	M95 MONOTUBE SHOCK	2
M9396 (REAR)	M95 MONOTUBE SHOCK	2

Part # G350RPMLT

Item #	Description	Qty
JL23HDFS-DR	HD DUAL RATE COIL, FRONT	2
JTG20RMS-S	COIL SPRING SPACER, REAR	2
JL24LLFD-L	LOWER LINK FRONT, DR	1
JL24LLFP-L	LOWER LINK FRONT, PA	1
JLFTBA18-B	TRACK BAR, FRONT	1
34RFTJN	3/4 RIGHT HAND JAM NUT	1
HD34X34DTB	HD 3/4 ROD END / TRACK BAR	1
H-BOX G351	HWDR BOX: G350 / 351 KITS	1
M9387 (FRONT)	M95 MONOTUBE SHOCK	2
M9396 (REAR)	M95 MONOTUBE SHOCK	2

Part # G350RPMLTD

Item #	Description	Qty
JL34HDFS-DR	HD DUAL RATE COIL, FRONT	2
JTG20RMS-S	COIL SPRING SPACER, REAR	2
JL24LLFD-L	LOWER LINK FRONT, DR	1
JL24LLFP-L	LOWER LINK FRONT, PA	1
JLFTBA18-B	TRACK BAR, FRONT	1
34RFTJN	3/4 RIGHT HAND JAM NUT	1
HD34X34DTB	HD 3/4 ROD END / TRACK BAR	1
H-BOX G351	HWDR BOX: G350 / 351 KITS	1
M9387 (FRONT)	M95 MONOTUBE SHOCK	2
M9396 (REAR)	M95 MONOTUBE SHOCK	2

Hardware Box Breakdown:

Part # H-BOX G351

Item #	Description	Qty
JTG20RBS-S	2.0 BUMP STOP BRACKET, RR	2
SBE4048-L	SWAY BAR END LINK, FRT	2
SBE506-L	SWAY BAR END LINK, RR	2
HB-ABSS2535	HDWR BAG: BUMP STOP, FRT	1
HB-JL24LLF	HDWR BAG: LOWER LINK FRT	1
HB-JLFTBB	HDWR BAG: TRACK BAR BRKT, F	1
HB-JTGRBS	HDWR BAG: BUMP STOP, RR	1
HB-JTGSBER	HDWR BAG: SB END LINK, RR	1
HB-SBENB03	HDWR BAG: SB END LINK, FRT	1
I-G350	INST SHEET: G350/G351 KITS	1

Hardware Bag Breakdown:

Part # HB-ABSS2535

Item #	Description	Qty
ABSS2535	BUMP STOP SPACER, FRT	2
38X412BHB	3/8 X 4-1/2 BUTTON HEAD BOLT	2
38SAEW	3/8 SAE WASHER	2
38CTN	3/8 COARSE THRD N/I LOCK NUT	2

Part # HB-JL24LLF

Item #	Description	Qty
14X1FTB	1/4 X 1 FINE THREAD BOLT \ G8	4
14SAEW	1/4 SAE WASHER	8
14FTN	1/4-28 FINE THRD N/I LOCK NUT	4

Hardware Bag Breakdown:

Part # HB-JLFTBB

Item #	Description	Qty
JLFTBB	ROD END BUSHING / 0.563 ID	2

Part # HB-JTGRBS

Item #	Description	Qty
516X1FTB	5/16 X 1 FINE THREAD BOLT	4
516SAEW	5/16 SAE WASHER	8
516FTN	5/16 FINE THREAD N/I LOCK NUT	4

Part # HB-JTGSBER

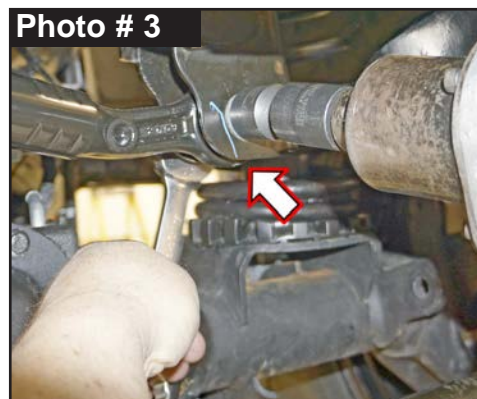
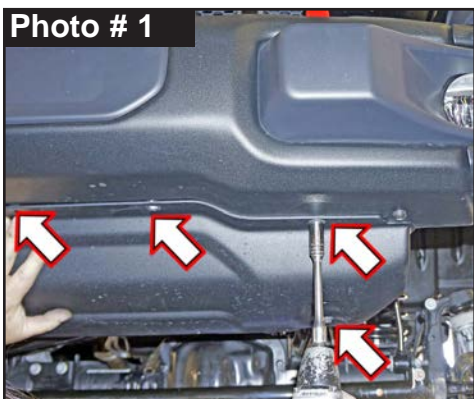
Item #	Description	Qty
HG58125-K	BLACK HOURGLASS BUSHING	4
403712	CRUSH SLEEVE / 1.25 LONG	4
12X65MMB	12MM X 65 METRIC BOLT	2
716USSW	7/16 USS FLAT WASHER	6
12MMN	12MM NYLON INSERT LOCK NUT	2

Part # HB-SBENB03

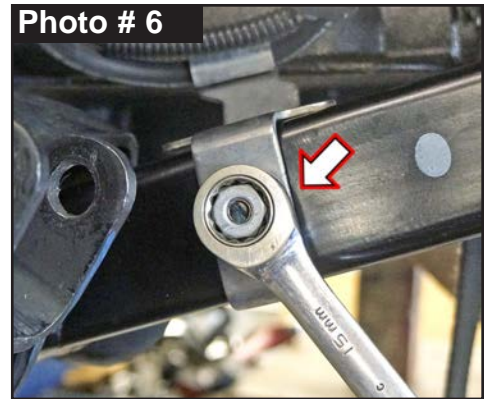
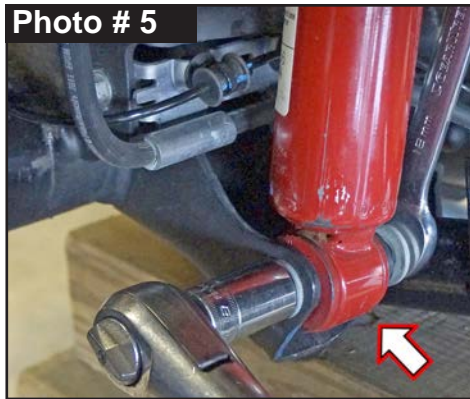
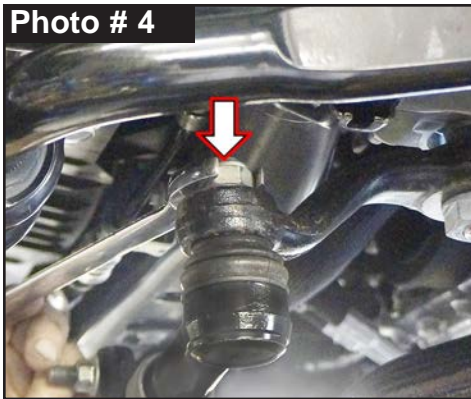
Item #	Description	Qty
141509	ES25 SLEEVE, 1.50 LONG	4
12X70MMB	12 X 70 METRIC BOLT \ 10.9	2
716USSW	7/16 USS FLAT WASHER	4
12MMN	12MM NYLON INSERT LOCK NUT	2

Front Installation: Note: Save all factory components & hardware for reuse, unless noted.

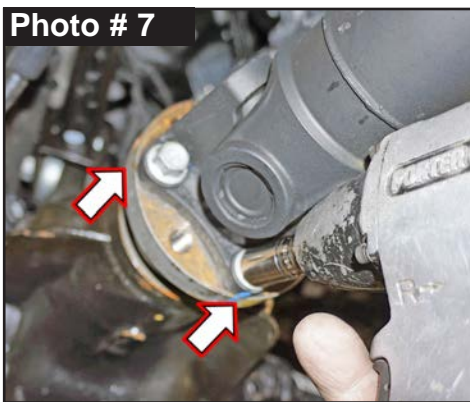
1. With vehicle on flat level ground, set emergency brake & chock rear tires \ wheels.
2. Raise front of vehicle, support frame rails using jack stands at indicated lift points in OEM service manual.
3. Remove the front tires \ wheels using a 22mm socket.
4. Remove OEM front skid plate using a 13mm socket \ wrench. (See Photo # 1)
5. Remove OEM front sway bar end links using a 6mm hex key socket \ wrench & 18mm socket \ wrench. (See Photo # 2)
6. Disconnect OEM front track bar from frame using a 21mm socket \ wrench. (See Photo # 3)



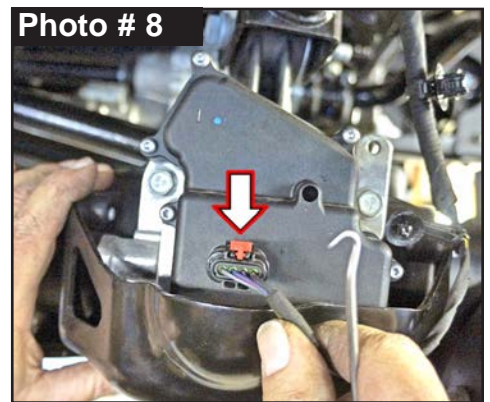
7. Disconnect OEM drag link from OEM pitman arm using a 21mm socket \ wrench. (See Photo # 4)
8. Disconnect OEM front shock from upper shock tower mount & lower axle mount using a 18mm socket \ wrench. (See Photo # 5)
9. Disconnect OEM front brake line bracket from OEM front lower control arm using a 15mm socket \ wrench. (See Photo # 6)



10. Mark the location of OEM front drive shaft \ flange at axle & disconnect using a 15mm socket \ wrench. (See Photo # 7)



11. Disconnect wiring harness from passenger side OEM front upper control arm using pliers.



12. Disconnect wiring harness from OEM 4WD actuator. (See Photo # 8)

13. Disconnect OEM vent hose from front differential using pliers.

14. While checking for appropriate slack in ABS lines, brake lines, differential vent hose & etc.

Tech Note: Watch the Center Axle Disconnect (CAD) connection & on **RUBICON** Models: The front locker connections.

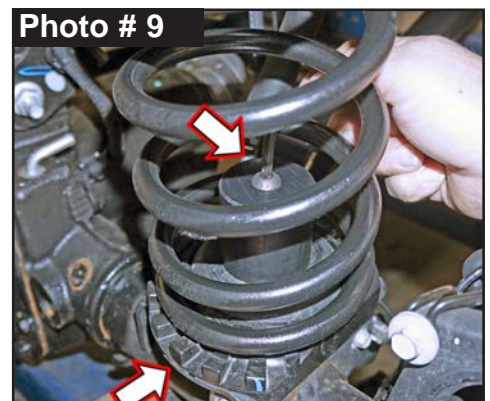
Lower front differential & remove OEM front coil springs.

15. Place Skyjacker # ABSS2535 Front Bump Stop Spacer inside Skyjacker Front Coil Spring. Install front coil spring with bump stop inside. Insert coil spring into upper tower first. Be sure that the coil is indexed to seat properly, then raise axle enough to hold coil spring in place.

Tech Note: If front axle cannot be lowered enough to allow coil spring to be installed, carefully rotate the pinion up to provide more clearance for coil installation.

Insert supplied 3/8" x 4-1/2" Button Head Bolt into bump stop. Align bolt into hole of OEM lower coil spring mount pad. Reach under spring mount pad & above axle tube to install supplied 3/8" SAE Washer & 3/8" Nylon Insert Lock Nut onto bolt. Tighten bump stop into place using a 7/32" hex key socket \ wrench & 9/16" socket \ wrench.

(See Photo # 9) Torque 25 ft.-lbs.



Tech Note: On Passenger Side, it may be necessary to remove ABS bracket to install bump stop lock nut. At rear of axle above shock mount, remove ABS mounting bracket using a 10mm socket \ wrench. Once bump stop spacer is tight, reinstall ABS line mounting bracket onto axle.

16. Raise front axle in order to load Skyjacker front coil springs.

Note: There has been occasional reports of Passenger Side coil spring having an inward bow after installation on taller lifts. If so, OEM upper coil spring isolator can be rotated 180°.

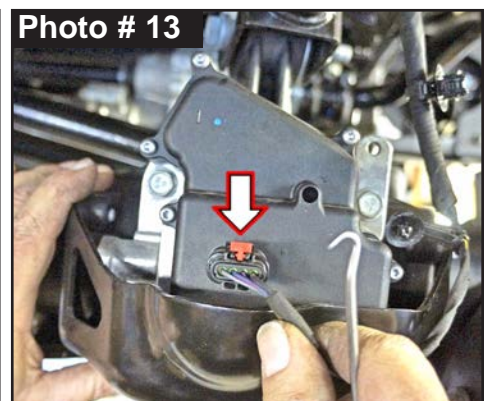
Mark OEM position of Passenger Side OEM upper coil spring isolator. Remove two (2) alignment pins on top of passenger side OEM upper coil spring isolator using diagonal cutting pliers or similar tool. Rotate passenger side OEM upper coil spring isolator so thicker portion is on inside toward frame. (See Photo # 10)

17. Connect OEM drive shaft with OEM hardware using a 15mm socket \ wrench. (See Photo # 11)

18. Connect OEM drag link to OEM pitman arm with OEM hardware using a 21mm socket \ wrench. (See Photo # 12) Torque 75 ft-lbs.

19. Connect OEM vent hose to front differential using pliers.

20. Connect wiring harness to OEM 4WD actuator. (See Photo # 13)



21. Connect wiring harness to passenger side OEM front upper control arm.

22. One at a time, remove OEM Front Lower Control Arm (LCA) using a 21mm socket \ wrench & 24mm socket \ wrench.

One at a time, install Skyjacker Front LCA with OEM hardware using a 21mm & a 24mm socket \ wrench. Secure, but **Do Not Completely Tighten** at this time.

Note: Skyjacker Front LCA are Side Specific. # JL24LLFD-L Driver & # JL24LLFP-L Passenger. **Tech Note:** Install with brake line tab toward outside of vehicle at axle mount. (See Photo # 14) The Offset Bend to Inside of vehicle.

23. Connect OEM front brake line bracket to Skyjacker LCA with supplied 1/4" x 1" Fine Thread Bolt with 1/4" SAE Washer outside & 1/4" SAE Washer with 1/4" Nylon Insert Lock Nut on inside using a 7/16" socket \ wrench. (See Photo # 14)

NOTE: Kit With Black MAX \ M95 Monotube: Proceed to Step 24.
Kit With ADX 2.0 Remote Reservoir: Proceed to Step 25.



24. Install Skyjacker front shock with OEM hardware at upper shock tower mount using a 18mm socket \ wrench. (See Photo # 15) **Tech Note:** Black MAX & M95 Monotube are to be mounted with cylinder body up for proper installation of pre-installed upper mount bushings.

Note: Upper shock mount has a OEM fixed nut welded onto frame. Be careful not to dislodge \ over tighten.

Connect Skyjacker shock at lower axle mount with OEM hardware using a 18mm socket \ wrench. (See Photo # 16) Secure, but **Do Not Completely Tighten** at this time.

To set bushings properly for ride height, these will be tightened once vehicle is on ground with full vehicle weight on tires \ wheels.

Photo # 15

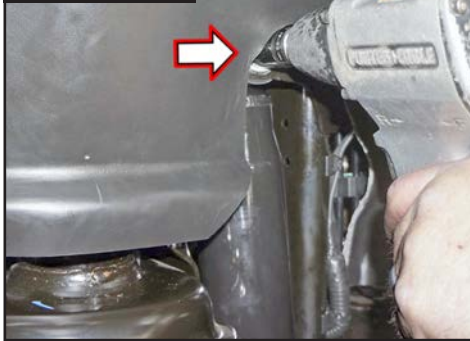
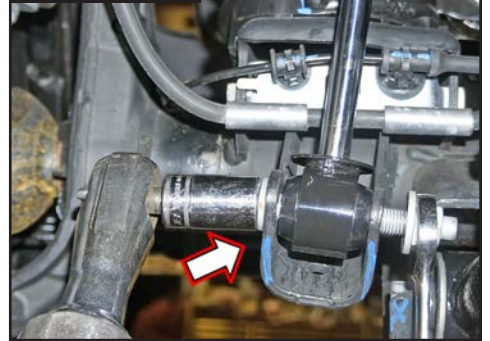


Photo # 16



25. **Tech Note:** ADX Remote Reservoir are to be mounted with cylinder body up & remote reservoir toward rear for proper clearance (opposite side of coil spring mount). (See Photo # 17 & # 18)

Loosely assemble two (2) supplied reservoir clamps with two (2) supplied hex head bolts using a 5/32" Hex Key socket. Position clamp into place around shock & reservoir cylinder. Secure, but **Do Not Completely Tighten** at this time.

Photo # 17

Front of the
← Vehicle

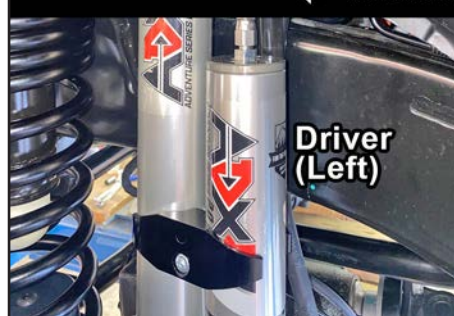


Photo # 18

Front of the
Vehicle →



Install Skyjacker ADX front shock with OEM hardware at upper shock tower mount using a 18mm socket \ wrench. **Note:** Upper shock mount has a OEM fixed nut welded onto frame. Be careful not to dislodge nor over tighten this nut.

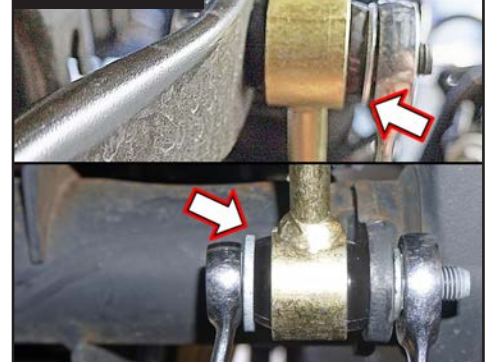
Connect Skyjacker shock at lower axle mount with OEM hardware using a 18mm socket \ wrench. Secure, but **Do Not Completely Tighten** at this time. These will be tightened once vehicle is on ground with full vehicle weight on tires \ wheels.

26. Coat with a water resistant grease & press # ES25 1.50 Long Steel Sleeves into upper & lower mounts of # SBE4048-L Front Sway Bar End Link.

Install upper end link mount with supplied 12mm x 70mm Bolt with a 7/16" USS Washer through sway bar with a 7/16" USS Washer & 12mm Nylon Insert Lock Nut using a 19mm socket \ wrench. (See Photo # 19)

Attach lower end link with OEM hardware using a 18mm socket \ wrench. **Note:** On Driver Side, install OEM lower bolt with large washer to outer bushing side of sway bar end link. Secure, but **Do Not Completely Tighten** at this time.

Photo # 19



27. Install OEM front skid plate with OEM hardware using a 13mm socket \ wrench. (See Photo # 1)
28. Install front tires \ wheels using a 22mm socket. Lower vehicle to ground. Torque 130 ft-lbs.

29. Make sure that tires\wheels are pointed straight ahead. Install fixed end of Skyjacker # JLFTBA18-B Front Adjustable Track Bar to frame with OEM hardware using a 21mm socket\ wrench. (See Photo # 20) **Note:** Do not tighten at this time.
30. Install supplied # JLFTBB Rod End Bushings onto rod end of Skyjacker track bar. Install rod end assembly into front axle mount with OEM hardware using a 21mm socket\ wrench. (See Photo # 21) **Note:** Do not tighten at this time.
- Tech Note:** It may be necessary to turn steering wheel to align track rod end with mount.

Photo # 20

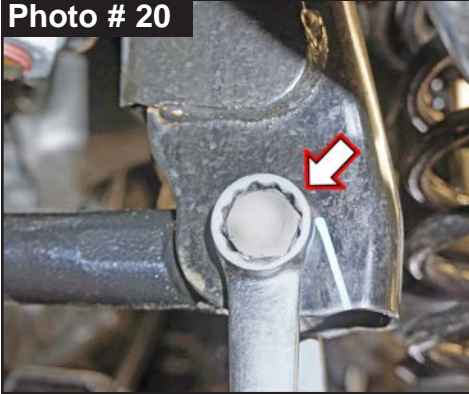
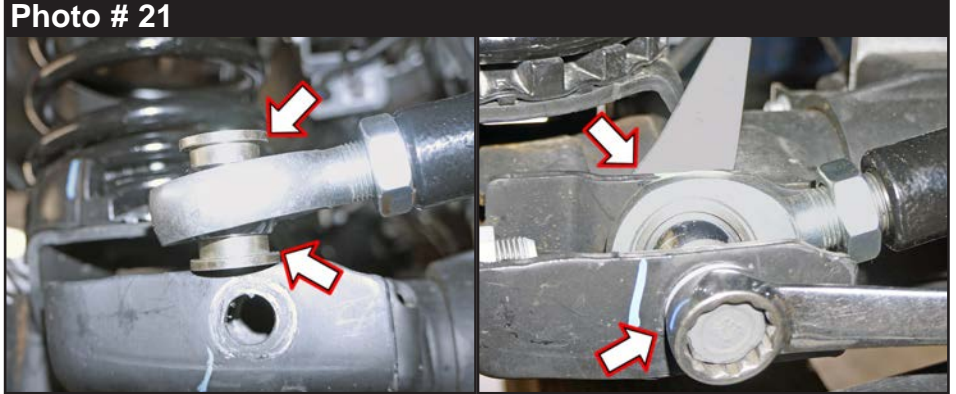


Photo # 21



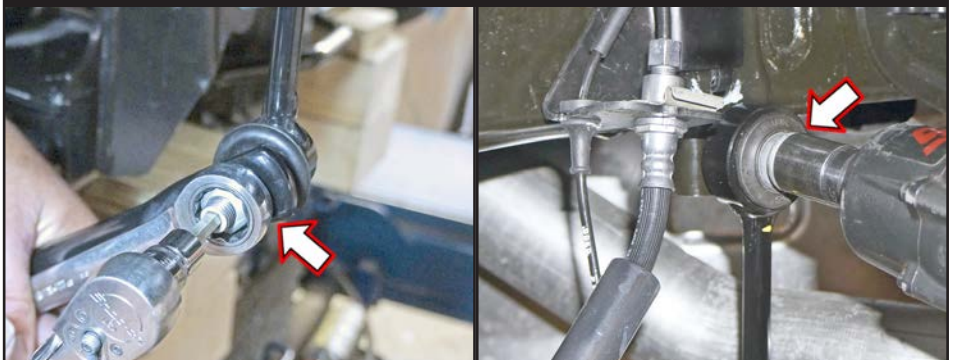
31. Check front of vehicle to make sure body is centered over front tires\wheels. Using a measuring tape, measure from inside of tire to frame on driver side, then measure passenger side.
- Compare two measurements; the aim is to make both sides equal. **Note:** If driver side measurement is greater than passenger side, track bar needs to be lengthened. If passenger side measurement is greater than driver side, track bar needs to be shortened.
- Remove adjustable rod end of track bar, loosen jam nut using a 1-1/8" wrench & turn rod end to adjust in or out. Once body is properly aligned over front tires\wheels, tighten OEM hardware using a 21mm socket\ wrench.
- Fully tighten all OEM hardware at upper frame mount & axle mount. Fully tighten jam nut of Skyjacker adjustable front track bar using a 1-1/8" wrench.
- Tighten supplied jam nut of Skyjacker Adjustable Front Track Bar using a 1-1/8" wrench.

Rear Installation: Note: Save all factory components & hardware for reuse, unless noted.

1. Chock front tires\wheels. Raise rear of vehicle & support frame rails using jack stands at indicated lift points in OEM service manual.
2. Remove rear tires\wheels using a 22mm socket.

3. Remove OEM rear sway bar end link. Disconnect lower link at sway bar using a 6mm hex key socket\ wrench & 18mm socket\ wrench. (See Photo # 22)
Disconnect upper link at outside frame using a 21mm socket\ wrench.

Photo # 22



4. Disconnect OEM rear track bar from rear axle mount using a 21mm socket \ wrench. (See Photo # 23) **Tech Note:** It may be necessary to raise \ lower axle to take pressure off track bar bolt. Retain OEM hardware.
5. Disconnect OEM rear shock at upper & lower hardware using a 21mm socket \ wrench. (See Photo # 24) Remove OEM rear shocks & retain hardware.

Photo # 23

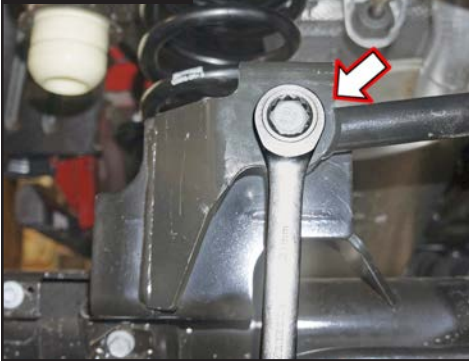


Photo # 24



6. One at a time, remove OEM Rear Upper Control Arm (UCA) using a 21mm socket \ wrench & 24mm socket \ wrench. (See Photo # 25)

One at a time, install Skyjacker # JTGULR24-L Rear UCA with OEM hardware using a 21mm & a 24mm socket \ wrench. (See Photo # 26 & # 27) **Note:** Skyjacker Rear UCA are not side specific. Secure, but **Do Not Completely Tighten** at this time.

Photo # 25



Photo # 26



Photo # 27



7. While checking for appropriate slack in ABS lines, brake lines, differential vent hose & etc. **Note:** RUBICON Models: Watch rear locker connections. Lower rear axle & remove OEM rear coil springs.

Tech Note: OEM upper coil spring isolators are Side Specific to properly align with coil \ frame mounts. Place upper coil spring isolator in upper coil bucket. Mark orientation on isolator & upper coil bucket. Mark top of isolators: DR & PA also. (See Photo # 28 & # 29)

Photo # 28



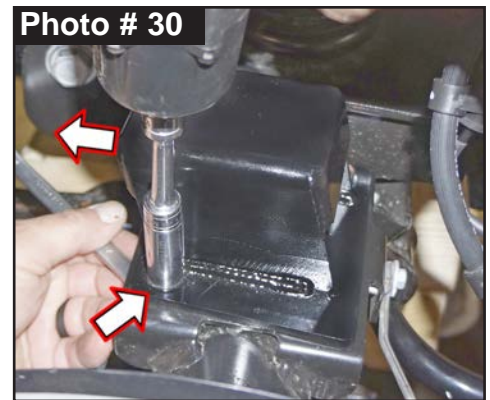
Photo # 29



8. Install Skyjacker # JTG30RBS-S Rear Bump Stop Spacer to OEM rear axle bump stop pads with supplied 5/16" x 1" Fine Thread Bolt with a 5/16" SAE Washer on top & a 5/16" SAE Washer with 5/16" Nylon Insert Lock Nut on bottom using 1/2" wrenches. (See Photo # 30)

Note: Install Skyjacker bump stop spacer with forward angle toward front of vehicle.

**NOTE: Kit With Rear Coil Spring Spacer: Proceed to Step 9.
Kit With Replacement Coil Springs: Proceed to Step 11.**



9. To help hold Skyjacker # JTG20RMS-S Rear Coil Spring Spacer in place during installation, the supplied \ attached 1/4" x 3/4" Course Thread Bolt installs from topside of OEM rear coil spring mount down into spacer. **Tech Note:** Install bolt from outside frame rail using a 7/16" wrench. (See Photo # 31)

10. Install OEM rear coil spring isolator. (See Photo # 32) **Note:** Be sure that tab of each OEM upper coil spring isolator is aligned with previous marks & tab hole of OEM upper coil spring mount. (See Photo # 28 & # 29) Install OEM rear coil springs. (See Photo # 33)



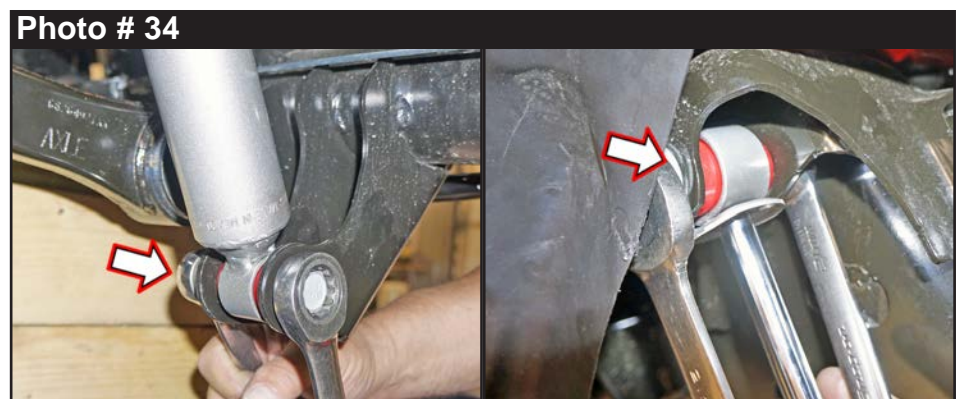
11. Install OEM rear coil spring isolator. (See Photo # 32) **Note:** Be sure that tab of each OEM upper coil spring isolator is aligned with previous marks & tab hole of OEM upper coil spring mount. (See Photo # 28 & # 29)

Install Skyjacker rear coil springs. (See Photo # 33) **Tech Note:** Skyjacker rear coil springs are two different lengths \ heights. The taller rear coil spring is to be installed on OEM fuel tank side of vehicle. The shorter rear coil spring is to be installed on opposite side of vehicle.

Raise rear axle in order to load Skyjacker rear coil springs.

**NOTE: Kit With Black MAX \ M95 Monotube: Proceed to Step 12.
Kit With ADX 2.0 Remote Reservoir: Proceed to Step 13.**

12. Install Skyjacker rear shock with OEM hardware using a 18mm socket \ wrench. Secure, but Do Not Completely Tighten. **Tech Note:** Black MAX & M95 Monotube are to be mounted with cylinder body up for proper installation of pre-installed upper mount bushings. (See Photo # 34)



13. **Tech Note:** ADX Remote Reservoir are to be mounted with cylinder body up & remote reservoir toward rear for proper clearance. (See Photo # 17 & # 18)

Loosely assemble two (2) supplied reservoir clamps with two (2) supplied hex head bolts using a 5/32" Hex Key socket. Position clamp into place around shock & reservoir cylinder. Secure, but Do Not Completely Tighten at this time.

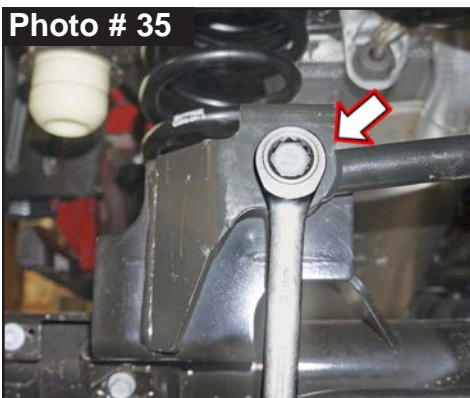
Install Skyjacker ADX rear shock with OEM hardware using a 18mm socket \wrench. Secure, but Do Not Completely Tighten at this time.

14. Connect OEM rear track bar to OEM bracket \axle mount with OEM bolt & tab nut using a 21mm socket \wrench. (See Photo # 35) **Note:** Install OEM bolt from rear-to-front of vehicle.
Tech Note: It may be necessary to raise \lower axle to align track bar bolt. Secure, but Do Not Completely Tighten at this time.

15. Coat supplied # HG58125-K Hourglass Bushing with a water resistant grease & press into upper & lower mounts of Skyjacker # SBE506-L Rear Sway Bar End Links. Coat & press # 403712 1.50 Long Steel Sleeves into upper & lower mount bushings.

Connect Skyjacker upper end link mount to OEM frame mount with OEM hardware & supplied 7/16 USS Flat Washer to bushing side of end link using a 18mm socket \wrench. (See Photo # 36) Secure, but Do Not Completely at this time.

Connect Skyjacker lower end link mount to OEM sway bar with supplied 12mm x 65mm Bolt with a 7/16" USS Washer from outside of vehicle inward through sway bar. Attach with a 7/16" USS Washer & 12mm Nylon Insert Lock Nut on inside using a 18mm socket \wrench. (See Photo # 36) Secure, but Do Not Completely at this time.



16. Connect OEM vent tube to rear axle using pliers.

17. Install rear tires \wheels using a 22mm socket. Lower vehicle to ground. Torque 130 ft-lbs.

Final Clearance Check & Torque Steps:

Note: Check Front Center Axle Disconnect (CAD) connection & on **RUBICON** Models: Check Front & Rear locker connections.

1. Start vehicle. Make sure there are no dash lights pertaining to suspension.
2. Jounce vehicle a couple of times. This will help suspension settle to new ride height. Cycle steering lock-to-lock & check all components for proper operation & clearances. Pay special attention to clearance between tires \wheels & ADX Shocks & Reservoirs, control arms, brake hoses, ABS wiring, etc.

3. Front Tighten & Torque Sequence.
 - Skyjacker track bar at frame using a 21mm wrench. Torque 52 ft-lbs. + 115°
 - Skyjacker track bar at axle using a 21mm wrench. Torque 52 ft-lbs. + 115°
 - Front shock absorber upper mount using a 18mm wrench. Torque 81 ft-lbs.
 - Front shock absorber lower mount using a 18mm wrench. Torque 74 ft-lbs.
 - ADX Reservoir clamp. Double check position & clearance. Tighten with 5/32" Hex Key socket.
 - Skyjacker sway bar end link upper bolt using a 19mm socket \ wrench. Torque 59 ft-lbs.
 - Skyjacker sway bar end link lower bolt using a 18mm socket \ wrench. Torque 59 ft-lbs.

4. Rear Tighten & Torque Sequence.
 - Track bar at OEM bracket. Torque 130 ft-lbs.
 - Rear shock absorber upper mount using a 18mm socket \ wrench. Torque 81 ft-lbs.
 - Rear shock absorber lower mount using a 18mm socket \ wrench. Torque 74 ft-lbs.
 - ADX Reservoir clamp. Double check position & clearance. Tighten with 5/32" Hex Key socket.
 - Skyjacker sway bar end link mounts using a 18mm socket \ wrench. Torque 59 ft-lbs.

Final Notes:

- After installation is complete, double check that all nuts & bolts are tight. Refer to the following chart for proper torque specifications. (**Note:** Do not re-tighten nuts & bolts where thread lock compound was used.)
- With vehicle placed on ground, cycle steering lock to lock & inspect steering, suspension, brake lines, front & rear drivelines, fuel lines & wiring harnesses for proper operation, tightness & adequate clearance.
- Have headlights readjusted to proper settings.
- Have a qualified alignment center align vehicle to OEM specifications.
- After first 100 miles, check all hardware for proper torque & periodically thereafter.

TORQUE SPECIFICATIONS					
INCH SYSTEM			METRIC SYSTEM		
Bolt Size	Grade 5	Grade 8	Bolt Size	Class 8.8	Class 10.9
5/16	180 in-lbs	240 in-lbs	6MM	60 in-lbs	108 in-lbs
3/8	30 ft-lbs	35 ft-lbs	8MM	216 in-lbs	23 ft-lbs
7/16	45 ft-lbs	60 ft-lbs	10MM	32 ft-lbs	45 ft-lbs
1/2	65 ft-lbs	90 ft-lbs	12MM	55 ft-lbs	75 ft-lbs
9/16	95 ft-lbs	130 ft-lbs	14MM	85 ft-lbs	120 ft-lbs
5/8	135 ft-lbs	175 ft-lbs	16MM	130 ft-lbs	165 ft-lbs
3/4	185 ft-lbs	280 ft-lbs	18MM	170 ft-lbs	240 ft-lbs
The Above Specifications Are Not to Be Used When the Bolt Is Being Installed With a Bushing.					

Seat Belts Save Lives, Please Wear Your Seat Belt.