



Installation Instructions for  
**717847**  
2019 RAM 1500 HEMI TRUCKS  
WITH FACTORY DUAL TAILPIPES  
DIRECT REPLACEMENT MUFFLER

**REVIEW FLOWMASTER SYSTEM:**

1. Please take a moment to read and understand these instructions before installing your Flowmaster performance system. Use the parts drawing and list to verify exhaust system contents.

NOTE: Some steps in the following instructions may contain two images. The first identifies location of action performed, the second identifies the action performed.

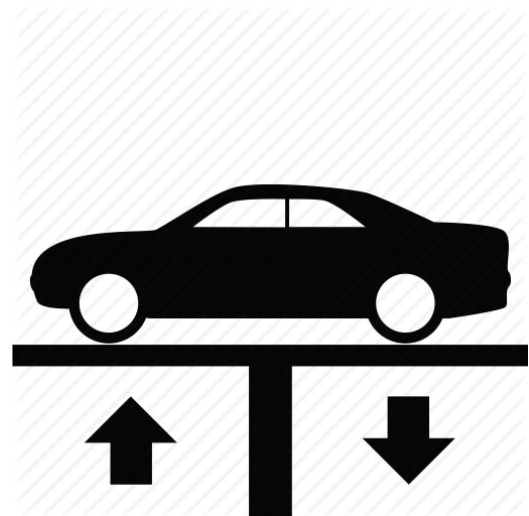
PART NO.	DESCRIPTION	QTY.
71229-520	Muffler	1
PK963	Hardware Pack includes:	1
MC300BS	Band Clamp	1
HW210	$\frac{3}{8}$ -16 x 1 $\frac{1}{2}$ " Bolt	2
HW303	$\frac{3}{8}$ " Washer	4
HW309	$\frac{3}{8}$ " Split Lock Washer	2
HW103	$\frac{3}{8}$ -16" Nut	2

**REMOVE STOCK EXHAUST SYSTEM:**

2. Raise the vehicle up on a hoist or rack to working height. If you don't have access to a hoist or rack, raise the vehicle and support securely with jack stands. Use penetrating lubricant as necessary to ease disassembly.

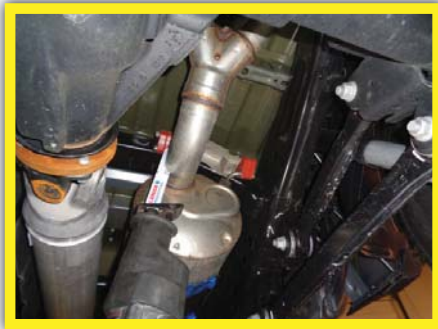
**WARNING:**

Avoid serious burns! Allow the exhaust system to cool completely before removing the factory exhaust system.

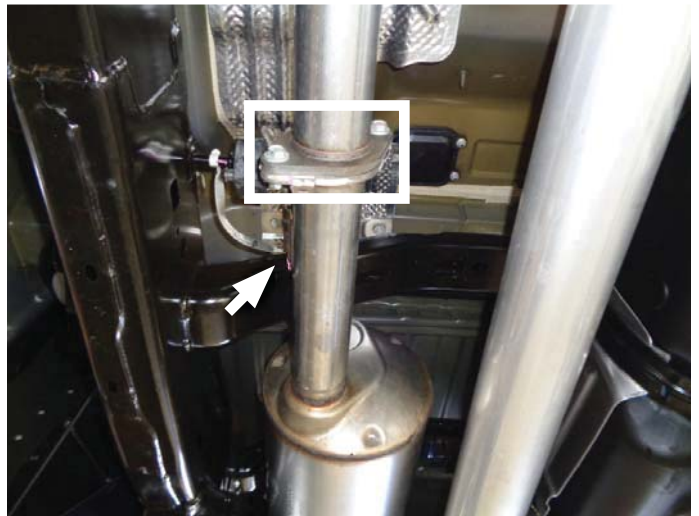
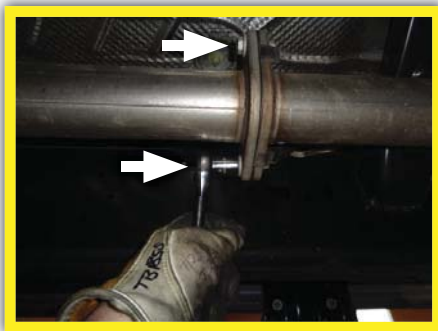


**NOTE:** Use stands as necessary to support parts as you detach them from your vehicle.

3. Mark line 1¼" back from factory muffler outlet. Then cut pipe to separate muffler. Deburr edges after cutting.



4. Remove bolts attaching muffler and front pipe. Remove grounding wire from muffler.



5. Remove muffler wire hangers from mounts, then remove cut out muffler section from factory exhaust system. Remove gasket from factory muffler inlet and retain for re-use.

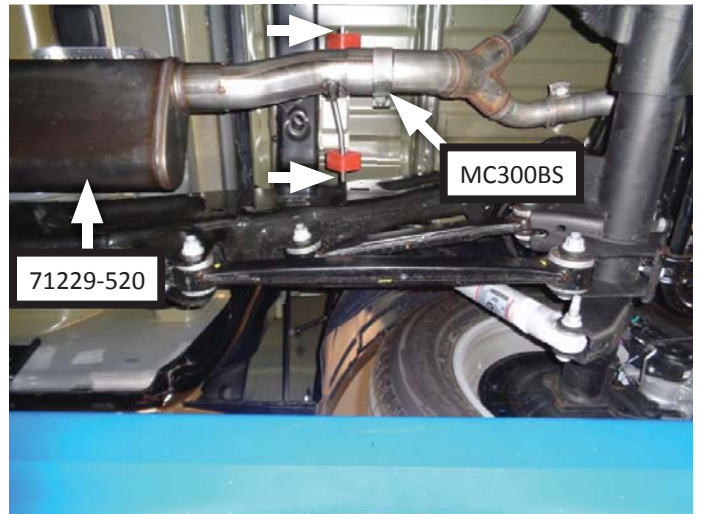


## INSTALL FLOWMASTER EXHAUST SYSTEM

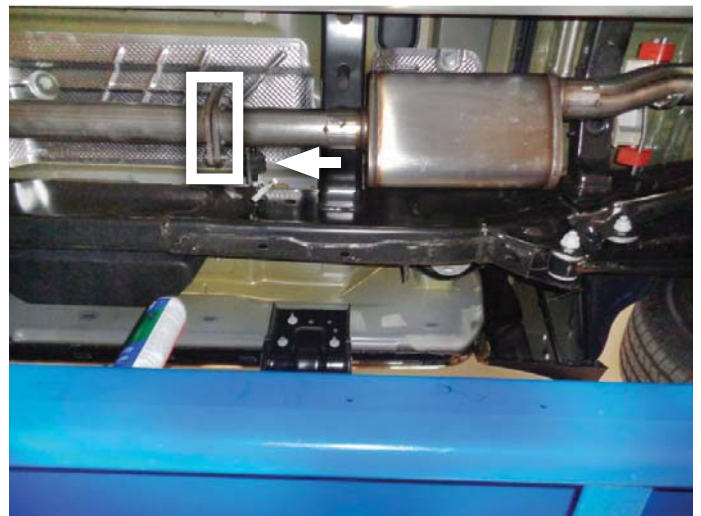
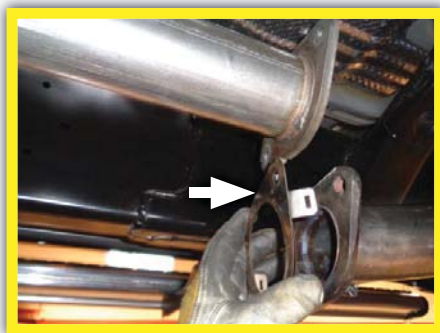
- Remove nut from Flowmaster clamp, apply anti-seize compound to bolts and re-install nut.



- Place clamp (MC300BS) onto slip-fit of muffler (71229-520). Push wire hangers on muffler into rubber isolators and connect to factory tailpipe inlet. Tighten clamp just enough to allow for adjustment.

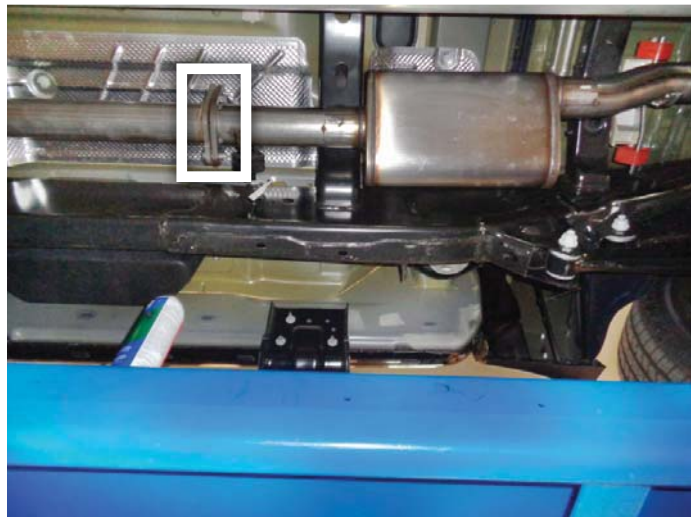
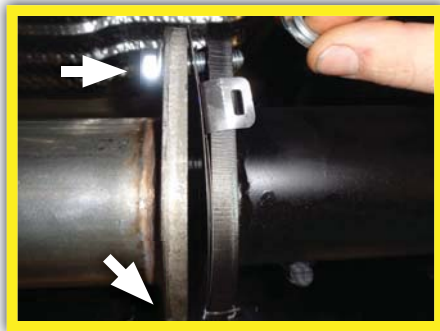


- Place gasket (removed step 5) between muffler and factory pipe then hang muffler wire hanger into rubber isolator. Connect grounding wire to muffler.





9. Secure flanges using bolt and flat washer on one side; flat washer, lock washer and nut on the other.



10. Adjust exhaust components to provide a satisfactory fit. Maintain a minimum of ½" clearance around all components of the exhaust system, keeping in mind suspension, travel and vibration. After making any required adjustments, securely tighten the clamps.
11. We recommend applying a one inch tack weld to all slip-fit connections for a more secure installation. You may also apply high temperature paint over welded areas to prevent rust and premature corrosion.

Congratulations, the installation of your FLOWMASTER performance exhaust system is now complete!



**NOTE:** Flowmaster maintains a highly trained technical service department to answer your technical questions, provide additional product information and offer various recommendations.

Technical Service: (707) 544-4761  
Monday – Friday: 7:30 am to 5:00 pm Pacific Time  
(Closed Saturday and Sunday)

**MAIN OFFICE:**  
100 Stony Point RD., Suite 125  
Santa Rosa, CA 95401





Installation Diagram for  
**717847**  
2019 RAM 1500 HEMI TRUCKS  
WITH FACTORY DUAL TAILPIPES  
DIRECT REPLACEMENT MUFFLER

