



Installation Instructions

**717872**

**CATBACK SOS FFX EXHAUST  
FITS: 2009-2014 FORD F-150**

**OVERVIEW:**

1. Please take a moment to read and understand these instructions before installing your Flowmaster performance system.

**NOTE:** Please inventory all parts before starting the installation process and call our tech line to report any missing parts. This will help avoid potentially stranding your vehicle until any missing replacement parts arrive.

ITM #	PART #	DESCRIPTION	QTY.
N/A	PK497	Hardware Pack includes:	1
9	382HA	Clamp Hanger Assembly	1
10	MC250BS	2½" Stainless Band Clamp	5
11	MC300BS	3" Stainless Band Clamp	2
12	HW502	¾" Hanger Keeper	3
13	HA168	Rubber Hanger	1
14	211HA	Rear Frame Mount	1
15	HW302	⅝" Flat Washer	2
16	HW308	⅝" Lock Washer	1
17	HW102	⅝-18 Z 5 Nut	1
18	HW205	⅝-18 x 1¼ HC Bolt	1
19	HW303	⅜" Flat Washer	4
20	HW309	⅜" Lock Washer	2
21	HW103	⅜-16 Z 5 Nut	2
22	HW212	⅜-16 x 2½ HC Bolt	2

ITM #	PART #	DESCRIPTION	QTY.
1	26764M	Inlet Pipe	1
2	26277M	Extension Pipe	1
3	72288-Z	FFX Muffler	1
4	86590M	Left Front Tailpipe	1
5	86591M	Right Tailpipe	1
6	86597M	Left Rear Tailpipe	1
7	86593M	Side Exit Pipe	2
8	ST507B	Tips	2

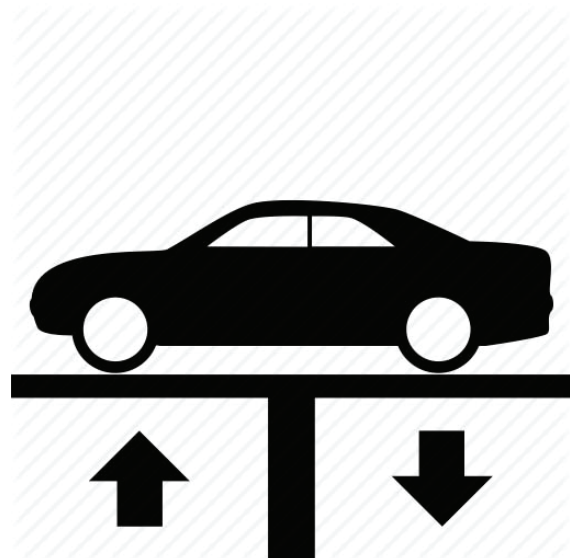
**REMOVE STOCK EXHAUST SYSTEM:**

2. Raise vehicle up on a hoist or rack to working height. If you don't have access to a hoist or rack, support vehicle with jack stands.

**WARNING:**  
Avoid serious burns! Allow your vehicle time to cool completely before touching any factory engine components.

**To ease disassembly of factory components:**

- Apply penetrating lubricant to mounts, bolts and clamps before you remove them.
- Use stands as necessary to support parts as you detach them from your vehicle.



- Cut exhaust at muffler outlet.



- Dismount hanger from isolator and remove rear tailpipe section.



- Remove bolts (x2) from flange at catalytic converter, disassemble wire hangers from isolators and remove muffler assembly from vehicle.



## INSTALL FLOWMASTER EXHAUST SYSTEM

6. Remove nuts from stock and Flowmaster clamps, apply anti-seize compound to bolts and re-install nuts.

**NOTE:** The image in this step is intended for illustrative purposes only and may or may not accurately reflect components included in your kit.

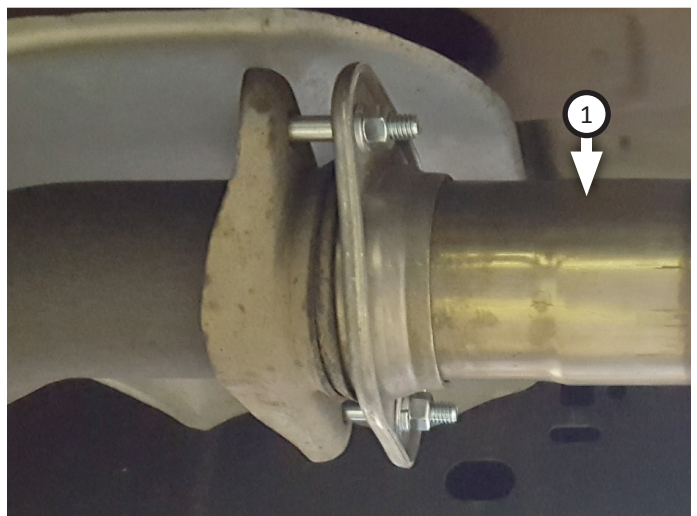
7. Every slip fit connection in this kit must seat 3" deep except for muffler connections which must seat 2" deep. Mark all slip fit components in your kit and mark them accordingly so your Flowmaster exhaust system fits properly onto your vehicle.



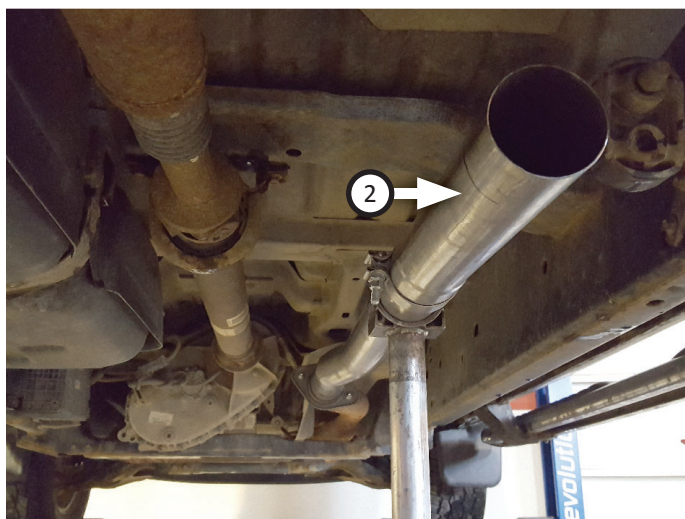
8. Find your vehicle specifications listed below then apply the corresponding modifications or assembly combinations to this kit to ensure it will install properly.

WB	BODY STYLE	BED LGTH	INLET ASSY:	MODIFICATION
126"	Regular Cab	6.5'	Inlet only	Trim 18" from inlet pipe
133"	SuperCab	5.5'	Inlet only	Trim 12" from inlet pipe
145"	SuperCrew	5.5'	Inlet only	None
145"	Regular Cab	8'	Inlet only	None
145"	SuperCab	6.5'	Inlet only	None
157"	SuperCrew	6.5'	Inlet/Extension	Trim 6" from extension pipe
163"	SuperCab	8'	Inlet/Extension	None

9. Loosely fasten **inlet pipe (1)** to cat. converter using (x2 ea.) **bolts (22)** through **flat washers (19)**, flanges, flat washers, **lock washers (20)** and **nuts (21)**.



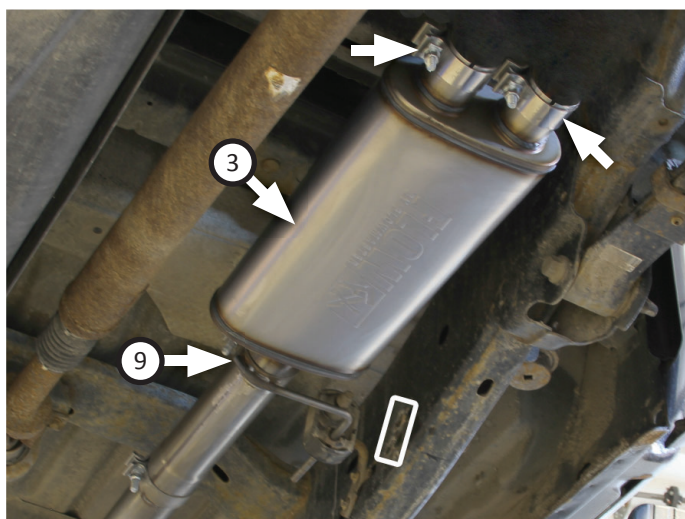
10. For applicable vehicles, place **clamp (11)** onto **extension pipe (2)** and connect it to inlet. Inlet pipe should be offset toward frame of vehicle.



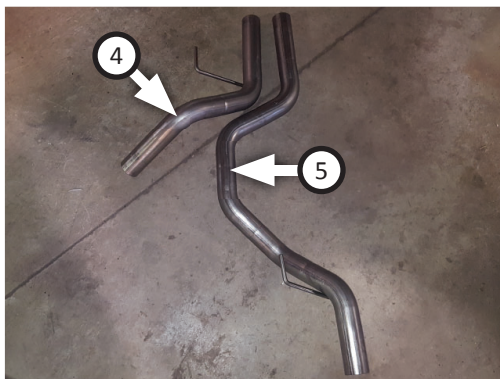
**NOTE:** If your vehicle uses an extension, you may need to use **clamps (x2) (11)** and clamp hanger.

11. Place **clamp hanger (9)** onto **muffler (3)** then connect it to inlet/extension. Insert hanger into isolator and tighten clamp just enough to allow for adjustment. Place **clamps (x2) (10)** onto muffler outlets.

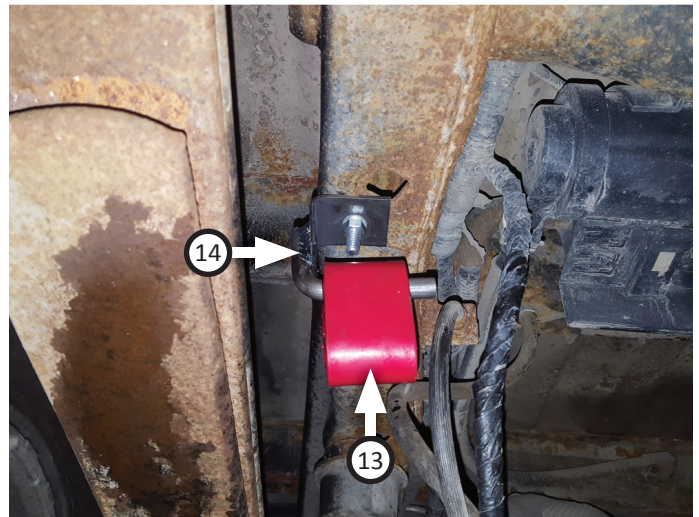
**NOTE:** If front hanger is misaligned, re-locate mount slightly forward and down into other mounting holes in frame.



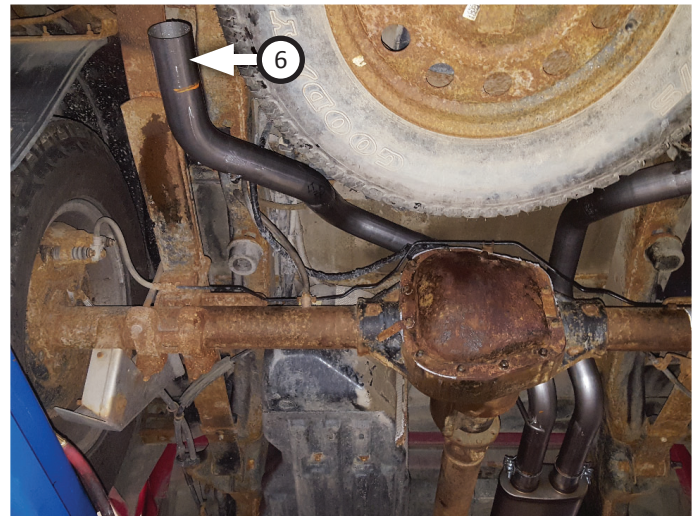
12. Route **left front (4)** and **right tailpipes (5)** over axle and connect them to muffler. Hang wire hangers into isolators and tighten clamps (x2) to allow for later adjustment.



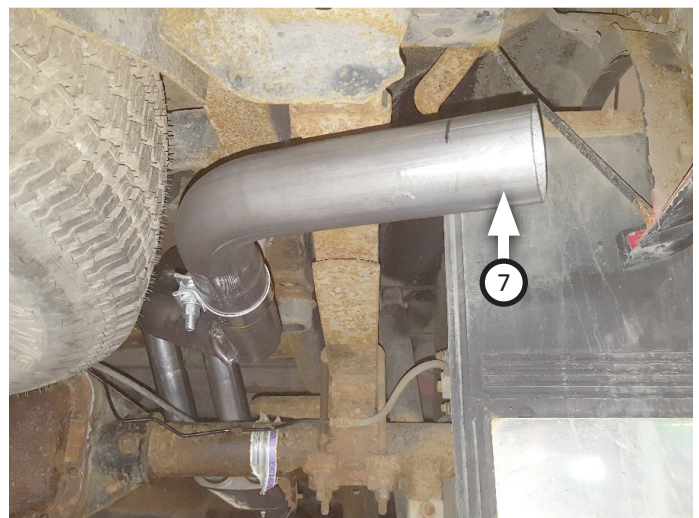
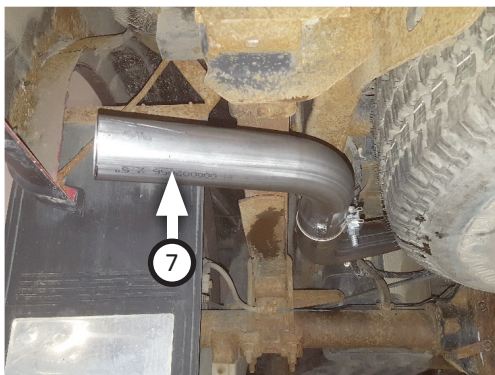
13. Secure **rear frame mount (14)** to vehicle using **bolt (18)** through frame, mount, **flat washer (15)**, **lock washer (16)** and **nut (17)**. Fit **rubber hanger (13)** onto end of hanger.



14. Place **clamp (10)** onto **left rear tailpipe (6)** then connect it to left front tailpipe. Insert wire hanger into rubber hanger then tighten clamp just enough to allow for adjustment.



15. Place **clamps (x2) (10)** onto slip-fit of **side exit pipes (x2) (7)** then connect them to tailpipes. Tighten clamps just enough to allow for adjustment.



16. Connect **tips (x2) (8)** to side exit pipes and secure connections.



17. Adjust exhaust components to provide a satisfactory fit. Maintain a minimum of  $\frac{1}{2}$ " clearance around all components of the exhaust system, keeping in mind suspension, travel and vibration. After making any required adjustments, securely tighten the clamps.
18. Slide **hanger keepers (x3) (12)** onto the end of each sideways hanger to prevent components from slipping out of their rubber mounts.
19. We recommend applying a one inch tack weld to all slip-fit connections for a more secure installation. You may also apply high temperature paint over welded areas to prevent rust and premature corrosion.



Congratulations, the installation of your FLOWMASTER performance exhaust system is now complete!





Installation Diagram for  
**717872**  
**CATBACK SOS FFX EXHAUST**  
**FITS: 2009-2014 FORD F-150**

