

Fitment and Required Components Guide



Holley Accessory Drive Kit Part Number 20-155

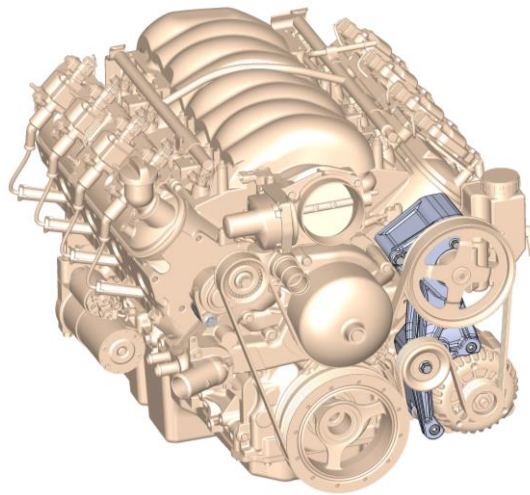
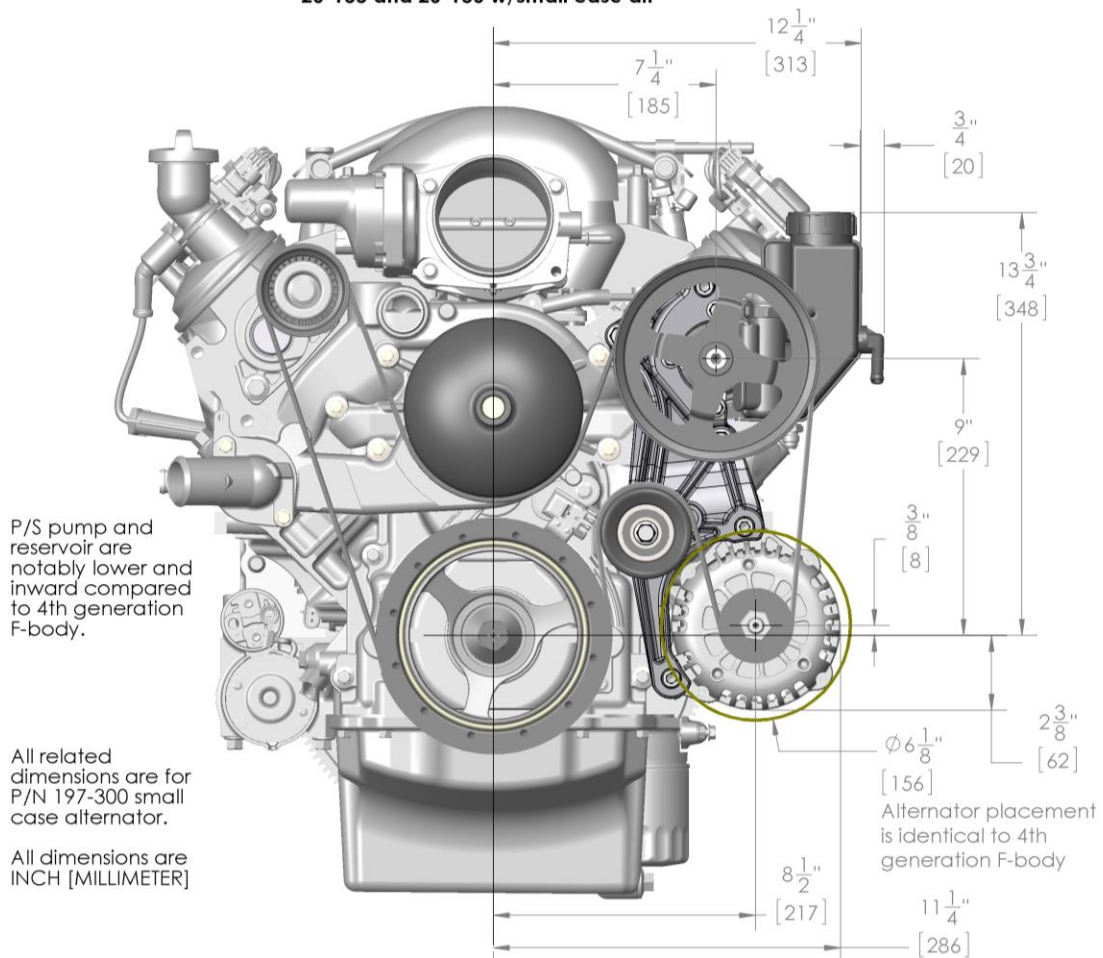


Table of Contents

Introduction:	2
Crank Pulley Belt Alignment Determination:	3
Overview of Parts Needed (but NOT included with 20-155 bracket kit):	3
Water Pump Determination and Associated Idler Assembly:	4
Idler Pulley Options:	8
Alternator Options:	9
Power Steering Pump/Reservoir Options:	10
Power Steering Pump Pulley:	10

For part numbers
20-155 and 20-156 w/small case alt



Introduction:

Holley's accessory drive kits offer clean, economical mounting of all LS engine accessories. These brackets look truly at home on any LS engine as if they came from the factory this way.

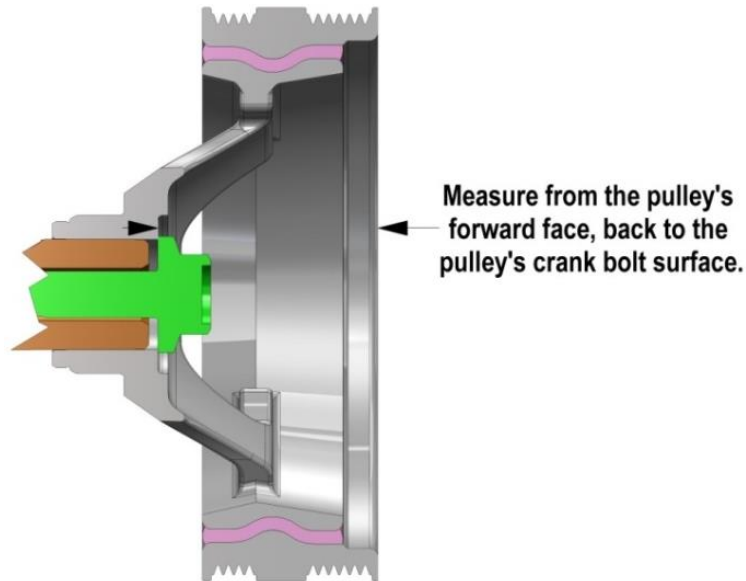
Holley's kits supply the required brackets and hardware needed for installation, but allow you to choose the source for supplemental accessories and components that are often already on the donor engine or the vehicle the engine is going into. Whether sourcing from the salvage yard, the local auto parts store, your GM parts dealer, or Holley and their premium matched components; you pick the source that matches your expectations and budget.

The 20-155 bracket kit is intended for use with engines using the stock tensioner assembly. This kit can be paired with Holley's low mount A/C bracket kit 20-159 or the engine's original A/C bracket and compressor. This bracket will also work with Holley high mount A/C bracket kit 20-133 or 20-134.

This guide will help with locating and sourcing components, as well as supplying notes and helpful hints for each. The first step is to determine which belt alignment you want to proceed with. This is determined by the crank pulley and often, but not always, the water pump. Typically, it is most cost effective to retain the existing crank pulley/water pump and space the bracket and other accessories to match. This bracket does not work with STANDARD belt alignment. If this is the original alignment, the crank pulley and possibly the water pump must be changed. An installation kit (part # 21-4) is REQUIRED for Long belt alignments. No installation kit is required when installing a 20-155 on an application with a MIDDLE belt alignment.

Note: All Corvette part application references in this guide are to NON-supercharged LS engines.

Crank Pulley Belt Alignment Determination:



See the below chart for reference dimensions.

Overview of Parts Needed (but NOT included with 20-155 bracket kit):

Components with specific belt alignments

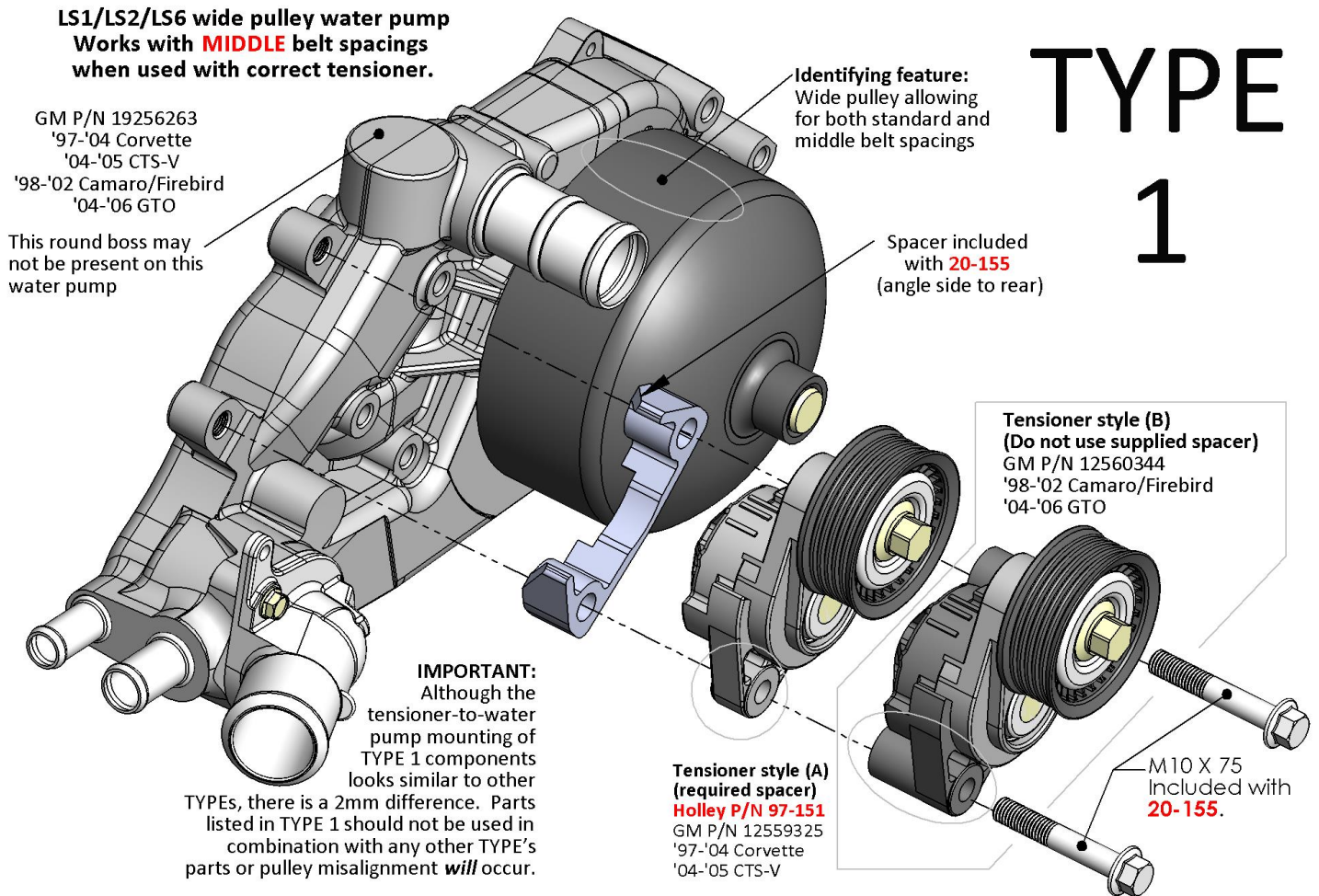
Belt Alignment Group	LS Application (Alignment Specific)	Holley Installation Kit (Alignment Specific)	Crank Pulley (Reference Dimension)		Water Pump (Alignment Specific)	Original Equipment Passenger's side A/C assembly
					GM #	GM # (Numerous)
Standard (will not work with this bracket)	Corvette / CTS-V / G8	N/A	1.5"	37 MM	N/A	<u>Will not work with this bracket</u>
Middle	F-body / GTO	N/A	2.25"	55 MM	19256263	Many LS passenger's side A/C compressors and brackets can be used with this kit, but only in conjunction with the original belt alignment.
Long	Camaro ('10-UP) / Truck (all)	21-4	3"	75 MM	19207665 or any truck WP	

Components that will work with all belt alignments

Smooth Idler Pulley	Alternator	Power Steering Pump Pulley	Power Steering Pump With Reservoir	Passenger's Side A/C Bracket
Holley # / GM #	Holley # / GM #	Holley # / GM #	Holley #	Holley #
97-150 / 12564401	197-300 or 197-301 / 10480326 or 15754097	97-152 / 12568997	198-101 (also recommended is 198-202 hardline/adapter)	Low mount: 20-159 High mount: 20-133 and 20-134 (also requires installation kit 21-2, or 21-3)

Water Pump Determination and Associated Idler Assembly:

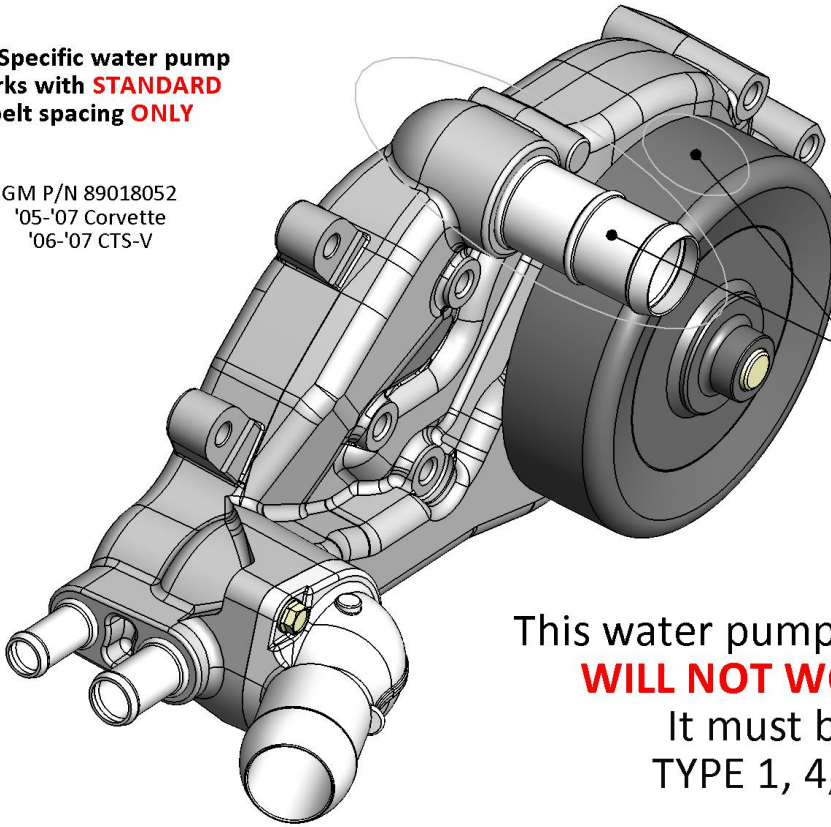
To determine which water pump type you have, refer to the following illustrations-



Holley Water pump - part # 22-100

LS2 Specific water pump
Works with **STANDARD**
belt spacing **ONLY**

GM P/N 89018052
'05-'07 Corvette
'06-'07 CTS-V



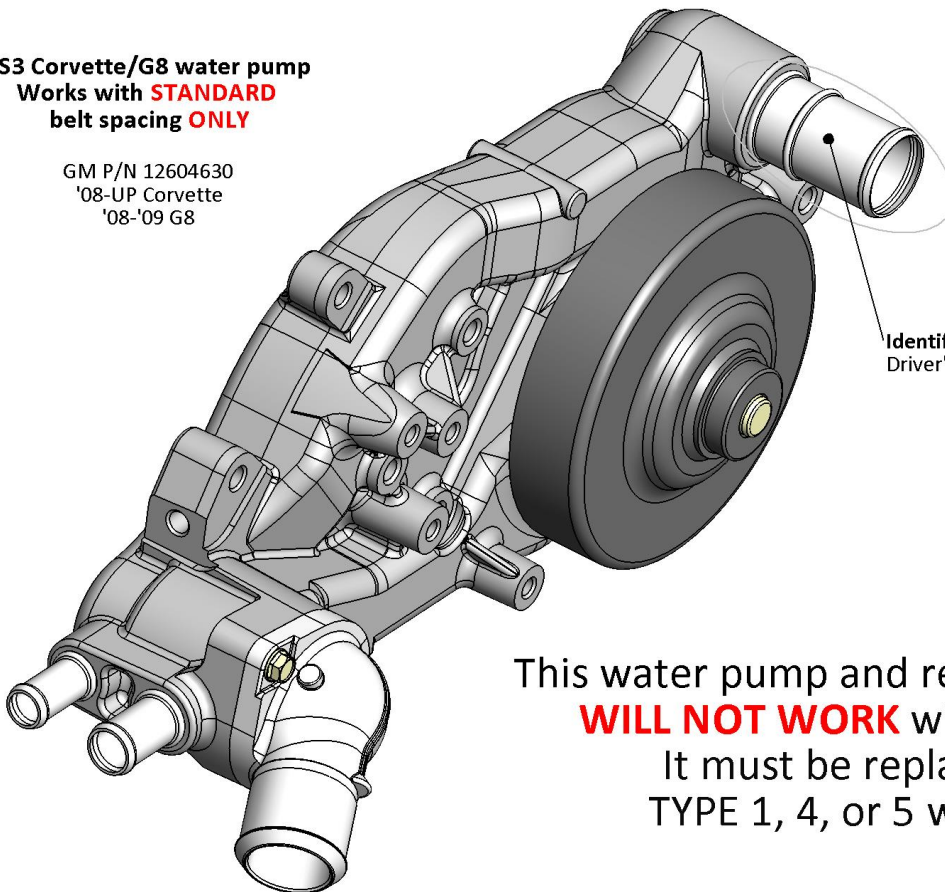
TYPE 2

Identifying features:
Narrow pulley and
passenger's side outlet

This water pump and respective tensioner
WILL NOT WORK with this bracket.
It must be replaced with a
TYPE 1, 4, or 5 water pump.

LS3 Corvette/G8 water pump
Works with **STANDARD**
belt spacing **ONLY**

GM P/N 12604630
'08-UP Corvette
'08-'09 G8



TYPE 3

Identifying feature:
Driver's side outlet

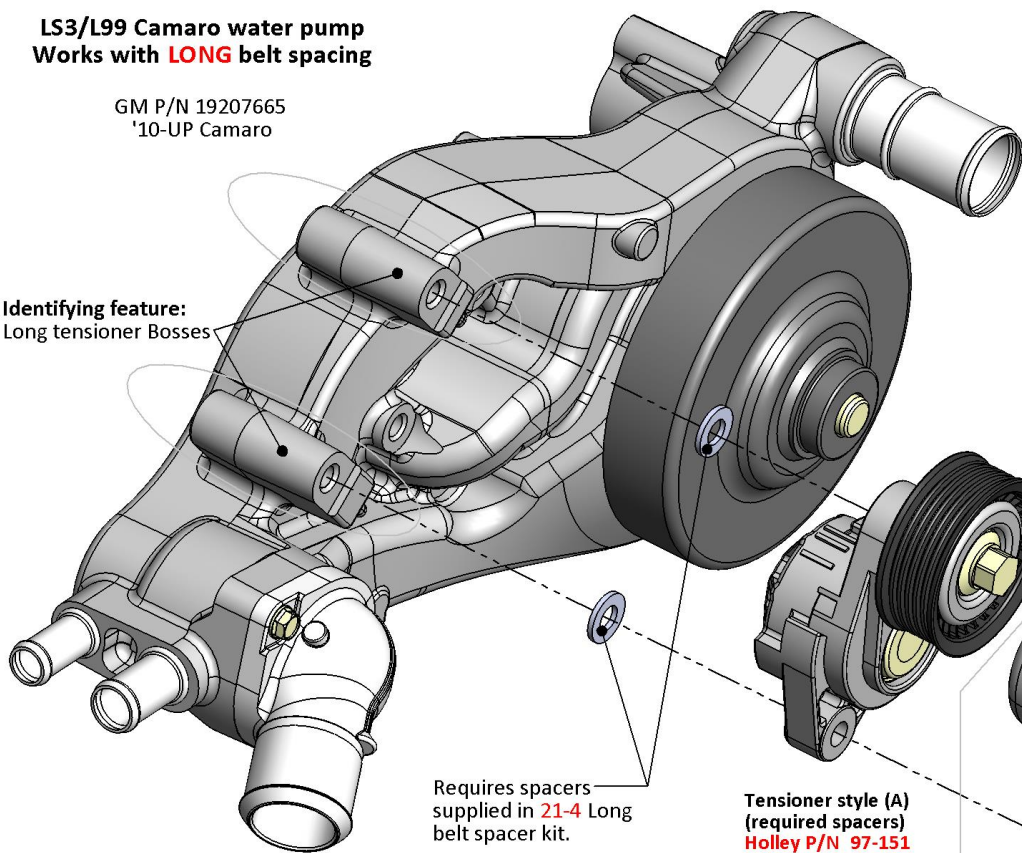
This water pump and respective tensioner
WILL NOT WORK with this bracket.
It must be replaced with a
TYPE 1, 4, or 5 water pump.

LS3/L99 Camaro water pump
Works with LONG belt spacing

GM P/N 19207665
'10-UP Camaro

TYPE 4

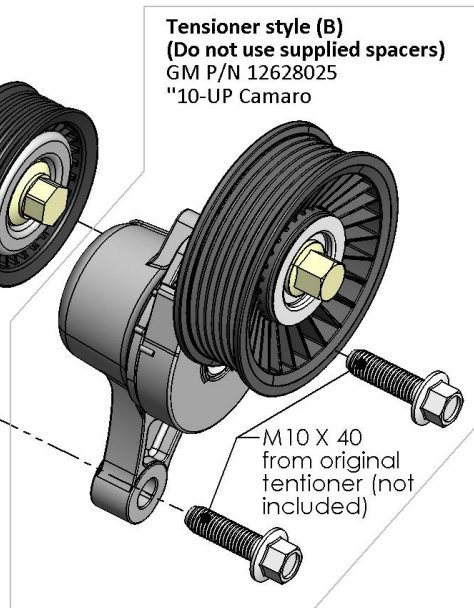
Identifying feature:
Long tensioner Bosses



Requires spacers
supplied in 21-4 Long
belt spacer kit.

Tensioner style (A)
(required spacers)
Holley P/N 97-151
GM P/N 12559325
'97-'04 Corvette
'04-'05 CTS-V

Tensioner style (B)
(Do not use supplied spacers)
GM P/N 12628025
'10-UP Camaro



M10 X 40
from original
tentioner (not
included)

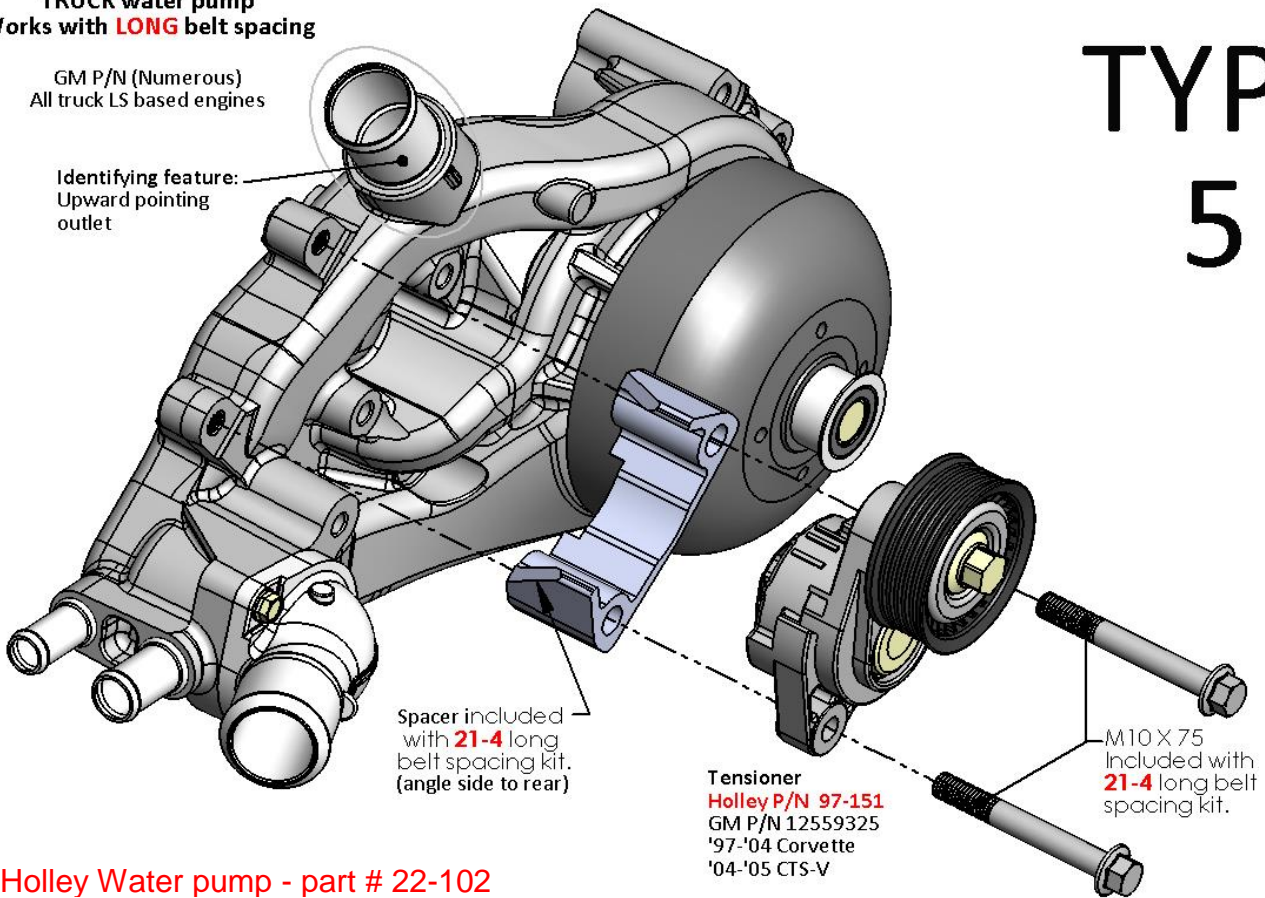
Holley Water pump - part # 22-101

TRUCK water pump
Works with **LONG** belt spacing

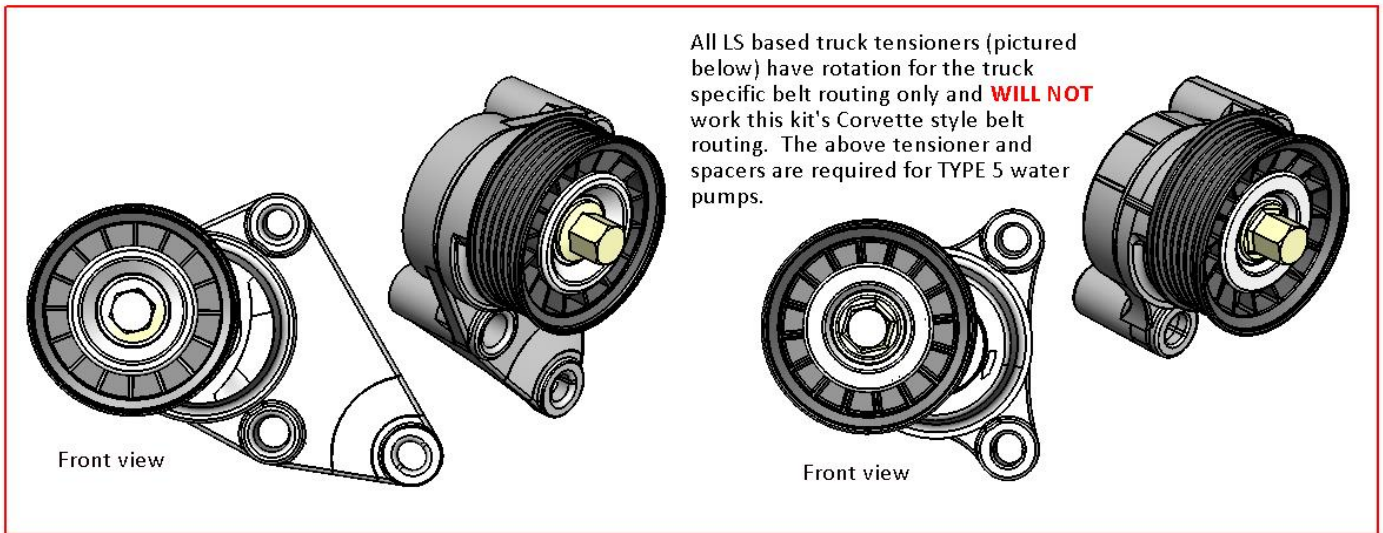
GM P/N (Numerous)
All truck LS based engines

Identifying feature:
Upward pointing
outlet

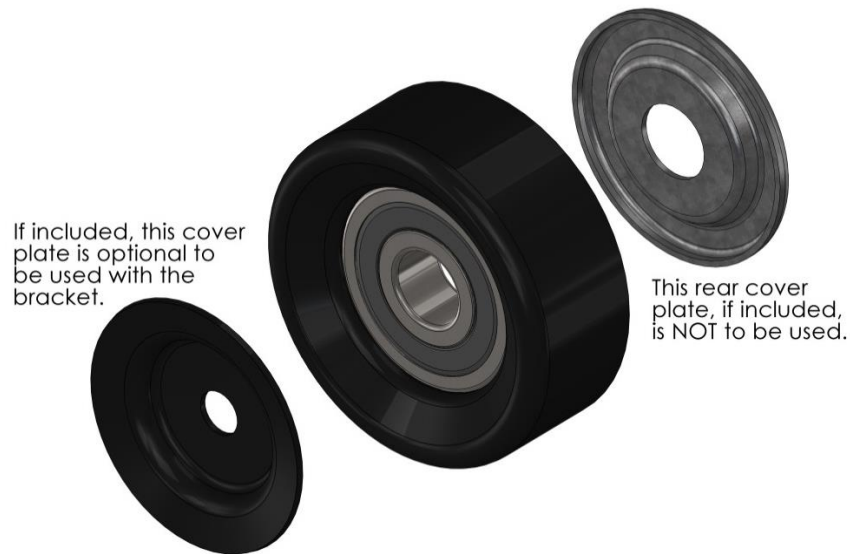
TYPE 5



Holley Water pump - part # 22-102

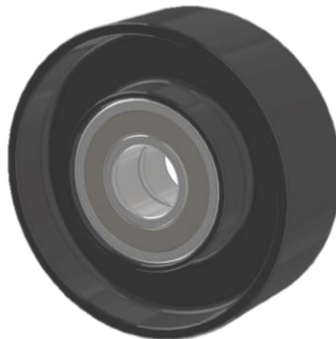


Idler Pulley Options:



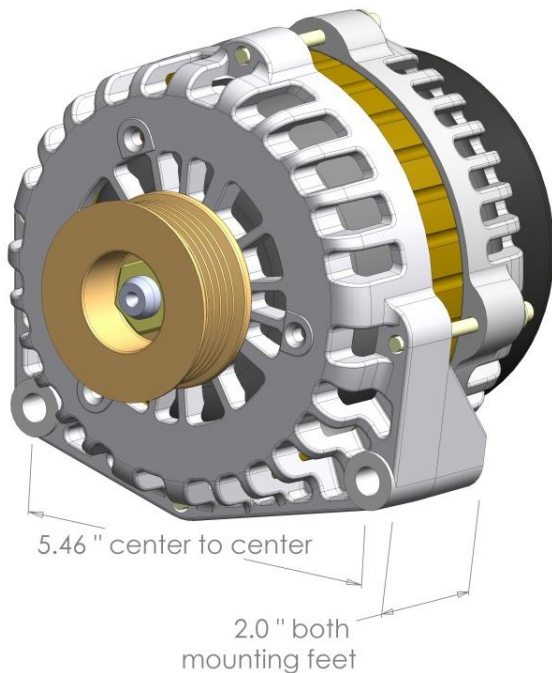
Idler pulley, 76 mm smooth
Holley part # 97-150
Application: '97 Corvette
DAYCO # 89059
GM # 12564401

One smooth idler pulley will be required.



Late model idler pulleys such as GM # 12568996 found on '05-up Corvette have a double bearing and will NOT align with this bracket system.

Alternator Options:



Case size: SMALL (130 mm)
Standard amperage: 105 AMPs
Holley part # 197-300
Application: '04 Chevy Silverado 5.3L (standard 105 amp choice)
GM/Delco # 10480326
Series/Lester # AD230/8247
Holley harness pigtail # 197-400

Case size: LARGE (144 mm)
High amperage: 130-145 AMPs
Holley part # 197-301
Application: '04 Chevy Silverado 5.3L (optional 130/145 amp choice)
GM/Delco # 15754097
Series/Lester # AD244/8292
Holley harness pigtail # 197-400

The Holley driver's side bracket uses standard alternators with 5.46" bolt spacing. This alternator type is common on most '96-'05 GM trucks and '98-'06 Camaro/Firebird/GTOs. There are two alternator amperages available in this type. Note: the Holley bracket DOES NOT work with '97-UP Corvette or '10-UP Camaro alternators which have 6" (154 mm) center bolt spacing.

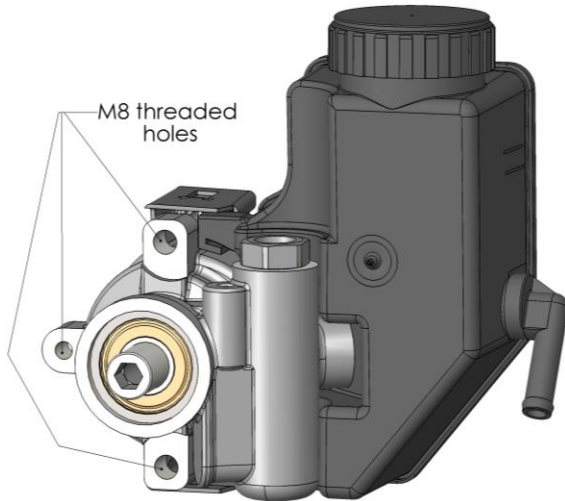
When wiring the alternator, connect the "L" terminal labeled on the alternator to switched voltage that is "on" when the key is in the run position. There must be either a charge indicator light (standard dash bulb) or a 560 ohm, 1/2 watt resistor (Radio Shack #271-1116) in-line on this wire. Holley's part #197-400 already has the resistor in line.

Late model alternators with only two pins visible in the alternator's harness plug instead of four, will NOT work for this application. They require the vehicles ECU to function. An alternator repair shop may be able to change out the internal regulator to the 4-pin type if needed.

HELPFUL HINT: The rear alternator housing can be rotated relative to the front housings. If desired, this will let the charge wire and harness plug to be rotated out of sight or away from interferences. Contact your alternator manufacture or an alternator shop for "re-clocking" procedures.

Power Steering Pump/Reservoir Options:

This Holley driver's side bracket uses a standard Saginaw TC type pump. Other pumps of the same housing and type may work.



Power steering pump/reservoir
Holley part # 198-101
Application: Universal
Description: Saginaw TC / GM type II
GM #: There is no direct OE replacement.

HELPFUL HINTS: The TC pump is very common in aftermarket. This kit is optimized for the above configuration. There are some variations in the aftermarket.

Holley pump 198-100 will work with this bracket, but require a remote reservoir and M8 X 80 through bolts and nuts (not included) as two of the holes are not threaded.

Both steel and aluminum pumps are available. The 198-101 is a steel version.

If using a bottom outlet (downward pointing) pump, either hard line or 961961ERL AN adapter is required.

Power Steering Pump Pulley:

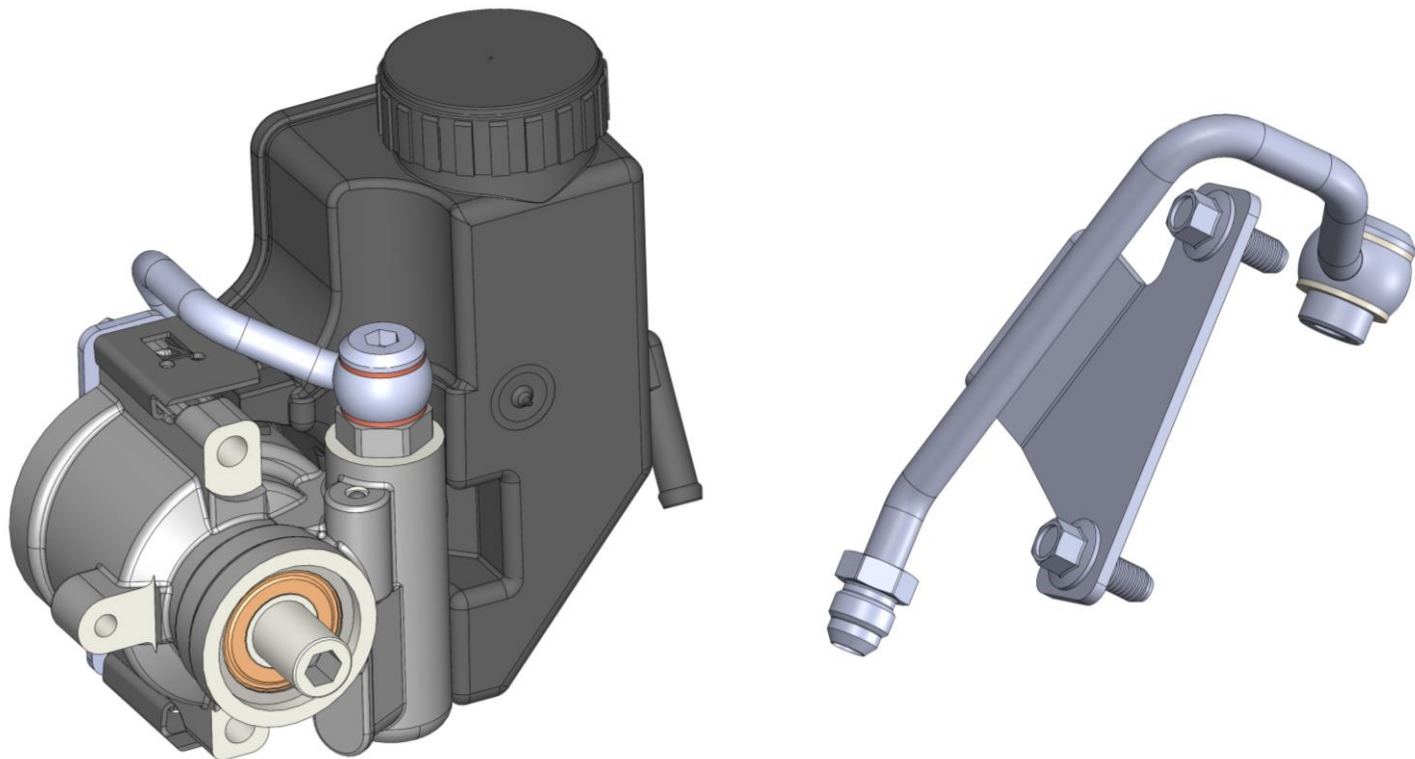
There are several pulleys that will fit the pump, but some do not have the correct belt alignment for this application. It is recommended to only use the below pulley with this kit. See applicable service manual for pulley installation procedures.

Power steering pump pulley
Holley P/N 97-152
Application: '97 Corvette
GM# 12568997
OD to grooves: 6.35"
OD overall: 6.70"



Helpful Hint: The above pulley has openings for pump mounting bolts and can be installed before the pump is installed.

Hardline Pressure Tube with Banjo Bolt (recommended):



Hardline Pressure Tube / -6 Male AN Adapter
Holley part # 198-202
Application: Saginaw TC / GM type II Pumps

HELPFUL HINTS: This bracket and 198-202 hardline are designed specifically to work together. There are other options, but this combination optimized plumbing to the steering box and cosmetics.

The DSE brand hardline does not work with this bracket.

After reviewing the components needed for your specific application, parts can be sourced and the Holley kits can be installed. See the included assembly instructions for installation procedures.

Holley® Performance Products, Inc.
1801 Russellville Road, Bowling Green, KY 42101
Technical Support: 1-866-464-6553
Phone: 1-270-781-9741
www.holley.com

© 2016 Holley Performance Products, Inc. All rights reserved.

199R11086
Date: 10-6-16