



INSTALLATION INSTRUCTIONS

Part # PG-SFC-002 - Sub Frame Connectors

COMPONENTS:

QTY	DESCRIPTION
4	5/16 BY 18 BY 3/4" BOLTS
6	5/16 BY 18 NYLOC NUTS
2	8MM BY 1.25 BY 40MM FLANGE BOLTS
12	5/16 WASHERS
2	SPECIALTY BOLTS
2	SPECIALTY NUTS

RECOMMENDED TOOLS:



10MM & 13MM SOCKET, WRENCH, DRILL WITH 3/8 BIT & TORQUE WRENCH

INSTRUCTIONS

Step 1: Support car on jack stands, as far to the outside of the vehicle or underneath suspension to keep body from flexing while jacked up.

Step 2: Remove the 13mm bolt in the rear plastic splash shields and clips. We will use this bolt hole for the new frame connector. The splash shield will not be put back on. (See Figure A)



Figure A

INSTALLATION INSTRUCTIONS

Step 3: Remove the bolt on the driveshaft carrier bearing on the side you are installing. A new, longer bolt is supplied for this. Using these two bolts, place the connector on the car and tighten in place. (See Figures B and C)

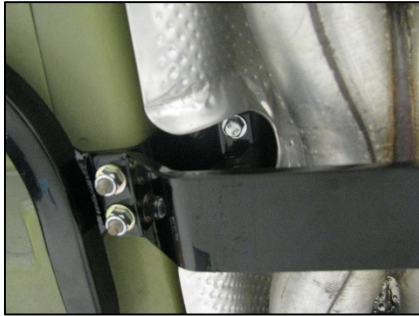


Figure B

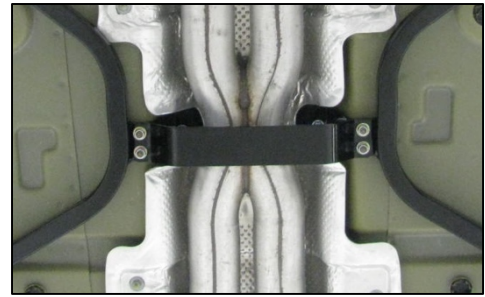


Figure C

Step 4: Using the sub frame connector as a guide, you can now drill the extra holes needed in the front bracket and the rear bracket. After drilling remove the connector and install supplied rear bolt with the tab in the hole you drilled. (See Figures D and E)

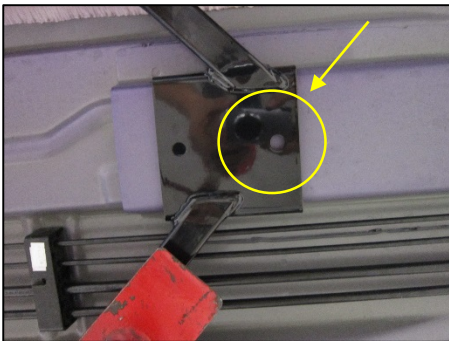


Figure D

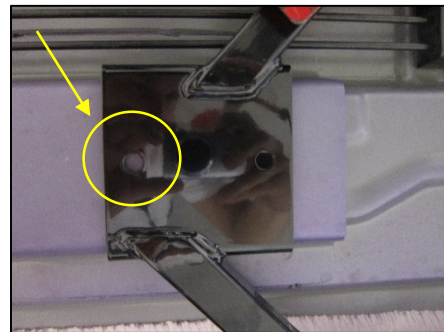


Figure E

Step 5: Sub frame connector can now be installed and the bolts tightened to 25ft.lbs. (See Figure F)



Figure F – Final Product